

Datasheet for ABIN1316798
PTOV1 Protein (AA 1-416) (GST tag)



[Go to Product page](#)

1 Image

Overview

Quantity:	25 µg
Target:	PTOV1
Protein Characteristics:	AA 1-416
Origin:	Human
Source:	Wheat germ
Protein Type:	Recombinant
Purification tag / Conjugate:	This PTOV1 protein is labelled with GST tag.
Application:	ELISA, Western Blotting (WB), Affinity Purification (AP), Antibody Array (AA)

Product Details

Purpose:	PTOV1 (Human) Recombinant Protein (P01)
Sequence:	MVRPRRAPYR SGAGGPLGGR GRPPRPLVVR AVRSRSWPAS PRGPQPPRIR ARSAPPMEGA RVFGALGPIG PSSPGLTLGG LAVSEHRLSN KLLAWSGVLE WQEKRRPYSD STAKLKRTL CQAYVNQGEN LETDQWPQKL IMQLIPQQLL TTLGPLFRNS QLAQFHFTNR DCDSLKGLCR IMGNGFAGCM LFPHISPCEV RVLMLLYSSK KKIFMGLIPY DQSGFVSAIR QVITTRKQAV GPGGVNSGPV QIVNNKFLAW SGVMEWQEPR PEPNSRSKRW LPSHVYVNQG EILRTEQWPR KLYMQLIPQQ LLTTLVPLFR NSRLVQFHFT KDLETLKSLC RIMDNGFAGC VHFSYKASCE IRVLMLLYSS EKKIFIGLIP HDQGNFVNGI RRVIANQQQV LQRNLEQEQQ QRGMGG
Characteristics:	Human PTOV1 full-length ORF (NP_059128.2, 1 a.a. - 416 a.a.) recombinant protein with GST-tag at N-terminal.
Purification:	in vitro wheat germ expression system

Target Details

Target:	PTOV1
Alternative Name:	PTOV1 (PTOV1 Products)
Background:	Full Gene Name: prostate tumor overexpressed 1 Synonyms: ACID2,DKFZp586I111,MGC71475
Gene ID:	53635
NCBI Accession:	NM_017432

Application Details

Application Notes:	Optimal working dilution should be determined by the investigator.
Comment:	Preparation method: in vitro, wheat germ expression system Product Quality tested by: 12.5% SDS-PAGE Stained with Coomassie Blue.
Restrictions:	For Research Use only

Handling

Buffer:	50 mM Tris-HCl, 10 mM reduced Glutathione, pH =8.0 in the elution buffer.
Handling Advice:	Aliquot to avoid repeated freezing and thawing.
Storage:	-80 °C
Storage Comment:	Best use within three months from the date of receipt of this protein.

Images

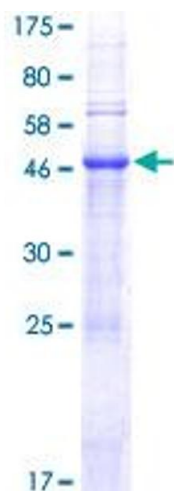


Image 1.