



[Go to Product page](#)

Datasheet for ABIN1316841

## PTPN23 Protein (AA 1233-1328) (GST tag)

### 1 Image

#### Overview

Quantity:	10 µg
Target:	PTPN23
Protein Characteristics:	AA 1233-1328
Origin:	Human
Source:	Wheat germ
Protein Type:	Recombinant
Purification tag / Conjugate:	This PTPN23 protein is labelled with GST tag.
Application:	ELISA, Western Blotting (WB), Affinity Purification (AP), Antibody Array (AA)

#### Product Details

Purpose:	PTPN23 (Human) Recombinant Protein (Q01)
Sequence:	RVVLRSGKDD YINASCVEGL SPYCPPLVAT QAPLPGTAAD FWLMVHEQKV SVIVMLVSEA EMEKQKVARY FPTERGQPMV HGALSLALSS VRSTET
Characteristics:	Human PTPN23 partial ORF ( NP_056281.1, 1233 a.a. - 1328 a.a.) recombinant protein with GST-tag at N-terminal.
Purification:	in vitro wheat germ expression system

#### Target Details

Target:	PTPN23
Alternative Name:	PTPN23 ( <a href="#">PTPN23 Products</a> )

## Target Details

Background:	Full Gene Name: protein tyrosine phosphatase, non-receptor type 23 Synonyms: DKFZp564F0923,HD-PTP,HDPTP,KIAA1471,PTP-TD14
Gene ID:	25930
NCBI Accession:	<a href="#">NM_015466</a>

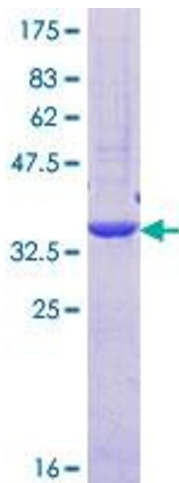
## Application Details

Application Notes:	Optimal working dilution should be determined by the investigator.
Comment:	Preparation method: in vitro, wheat germ expression system Product Quality tested by: 12.5% SDS-PAGE Stained with Coomassie Blue.
Restrictions:	For Research Use only

## Handling

Buffer:	50 mM Tris-HCl, 10 mM reduced Glutathione, pH =8.0 in the elution buffer.
Handling Advice:	Aliquot to avoid repeated freezing and thawing.
Storage:	-80 °C
Storage Comment:	Best use within three months from the date of receipt of this protein.

## Images



**Image 1.**