



[Go to Product page](#)

Datasheet for ABIN1316851

SHP1 Protein (AA 1-597) (GST tag)

1 Image

Overview

Quantity:	10 µg
Target:	SHP1 (PTPN6)
Protein Characteristics:	AA 1-597
Origin:	Human
Source:	Wheat germ
Protein Type:	Recombinant
Purification tag / Conjugate:	This SHP1 protein is labelled with GST tag.
Application:	Western Blotting (WB), ELISA, Affinity Purification (AP), Antibody Array (AA), Phosphatase Activity Assay (PAA)

Product Details

Purpose:	PTPN6 (Human) Recombinant Protein (P01)
Sequence:	MLSRGWFHRD LSGLDAETLL KGRGVHGSFL ARPSRKNQGD FLSVSRVGDQ VTHIRIQNSG DFYDLYGGEK FATLTELVEY YTQQQGVLDQ RDGTIIHLKY PLNCSDPTSE RWHYGHMSSG QAETLLQAKG EPWTFVLVRES LSQPGDFVLS VLSQPKAGP GSPLRVTHIK VMCEGGRYTV GGLETFDLSL DLVEHFKKTG IEEASGAFVY LRQPYATRV NAADIENRVL ELNKKQESD TAKAGFWEF ESLQKQEVKN LHRLEGQRP ENKGKNRYKN ILPFDHSRVI LQGRDSNIPG SDYINANYIK NQLLGP DENA KTYIASQGCL EATVNDFWQM AWQENSRVIV MTTREVEKGR NKCVPYWPEV GMRAYGPYS VTNCGEHDTT EYKLRTLQVS PLDNGDLIRE IWHYQYLSWP DHGVPSEPGG VLSFLDQINQ RQESLPHAGP IIVHCSAGIG RTGTIIVIDM LMENISTKGL DCDIDIQKTI QMVRAQRSGM VQTEAQYKFI YVAIAQFIET TKKKLEVLQS QKGQSESYGN ITYPPAMKNA HAKASRTSSK HKEDVYENLH TKNKREEKVK KQRSADKEKS KGSLKRK

Product Details

Characteristics: Human PTPN6 full-length ORF (AAH07667, 1 a.a. - 597 a.a.) recombinant protein with GST-tag at N-terminal.

Purification: in vitro wheat germ expression system

Target Details

Target: SHP1 (PTPN6)

Alternative Name: PTPN6 ([PTPN6 Products](#))

Background: Full Gene Name: protein tyrosine phosphatase, non-receptor type 6
Synonyms: HCP,HCPH,HPTP1C,PTP-1C,SH-PTP1,SHP-1,SHP-1L,SHP1

Gene ID: 5777

Pathways: [JAK-STAT Signaling](#), [TCR Signaling](#), [TLR Signaling](#), [Nuclear Receptor Transcription Pathway](#), [Positive Regulation of Peptide Hormone Secretion](#), [Steroid Hormone Mediated Signaling Pathway](#), [Response to Growth Hormone Stimulus](#), [Regulation of Leukocyte Mediated Immunity](#), [CXCR4-mediated Signaling Events](#), [Signaling Events mediated by VEGFR1 and VEGFR2](#), [BCR Signaling](#)

Application Details

Application Notes: Optimal working dilution should be determined by the investigator.

Comment: Preparation method: in vitro, wheat germ expression system
Product Quality tested by: 12.5% SDS-PAGE Stained with Coomassie Blue.

Restrictions: For Research Use only

Handling

Buffer: 50 mM Tris-HCl, 10 mM reduced Glutathione, pH =8.0 in the elution buffer.

Handling Advice: Aliquot to avoid repeated freezing and thawing.

Storage: -80 °C

Storage Comment: Best use within three months from the date of receipt of this protein.

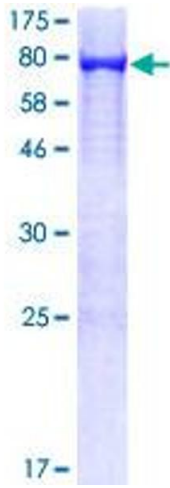


Image 1.