

Datasheet for ABIN1316861
CD45 Protein (AA 1207-1304) (GST tag)



[Go to Product page](#)

1 Image

Overview

Quantity:	10 µg
Target:	CD45 (PTPRC)
Protein Characteristics:	AA 1207-1304
Origin:	Human
Source:	Wheat germ
Protein Type:	Recombinant
Purification tag / Conjugate:	This CD45 protein is labelled with GST tag.
Application:	Western Blotting (WB), ELISA, Affinity Purification (AP), Antibody Array (AA)

Product Details

Purpose:	PTPRC (Human) Recombinant Protein (Q01)
Sequence:	PGMVSTFEQY QFLYDVIAS T YPAQNGQVKK NNHQEDKIEF DNEVDKVKQD ANCVNPLGAP EKLPEAKEQA EGSEPTSGTE GPEHSVNGPA SPALNQGS
Characteristics:	Human PTPRC partial ORF (NP_002829.2, 1207 a.a. - 1304 a.a.) recombinant protein with GST-tag at N-terminal.
Purification:	in vitro wheat germ expression system

Target Details

Target:	CD45 (PTPRC)
Alternative Name:	PTPRC (PTPRC Products)

Target Details

Background:	Full Gene Name: protein tyrosine phosphatase, receptor type, C Synonyms: B220,CD45,CD45R,GP180,LCA,LY5,T200
Gene ID:	5788
NCBI Accession:	NM_002838
Pathways:	TCR Signaling , Regulation of Leukocyte Mediated Immunity , Positive Regulation of Immune Effector Process , Production of Molecular Mediator of Immune Response , CXCR4-mediated Signaling Events , BCR Signaling

Application Details

Application Notes:	Optimal working dilution should be determined by the investigator.
Comment:	Preparation method: in vitro, wheat germ expression system Product Quality tested by: 12.5% SDS-PAGE Stained with Coomassie Blue.
Restrictions:	For Research Use only

Handling

Buffer:	50 mM Tris-HCl, 10 mM reduced Glutathione, pH =8.0 in the elution buffer.
Handling Advice:	Aliquot to avoid repeated freezing and thawing.
Storage:	-80 °C
Storage Comment:	Best use within three months from the date of receipt of this protein.

Images

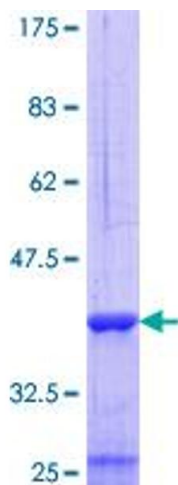


Image 1.