



[Go to Product page](#)

Datasheet for ABIN1316869

## PTPRF Protein (AA 1788-1897) (GST tag)

### 1 Image

#### Overview

Quantity:	10 µg
Target:	PTPRF
Protein Characteristics:	AA 1788-1897
Origin:	Human
Source:	Wheat germ
Protein Type:	Recombinant
Purification tag / Conjugate:	This PTPRF protein is labelled with GST tag.
Application:	Western Blotting (WB), ELISA, Affinity Purification (AP), Antibody Array (AA)

#### Product Details

Purpose:	PTPRF (Human) Recombinant Protein (Q01)
Sequence:	FQFTDWPEQG VPKTGEGFID FIGQVHKTKE QFGQDGPITV HCSAGVGRTG VFITLSIVLE RMRYEGVVDM FQTVKTLRTQ RPAMVQTEDQ YQLCYRAALE YLGSFDHYAT
Characteristics:	Human PTPRF partial ORF ( NP_002831, 1788 a.a. - 1897 a.a.) recombinant protein with GST-tag at N-terminal.
Purification:	in vitro wheat germ expression system

#### Target Details

Target:	PTPRF
Alternative Name:	PTPRF ( <a href="#">PTPRF Products</a> )

## Target Details

Background:	Full Gene Name: protein tyrosine phosphatase, receptor type, F Synonyms: FLJ43335,FLJ45062,FLJ45567,LAR
Gene ID:	5792
NCBI Accession:	<a href="#">NM_002840</a>
Pathways:	<a href="#">EGFR Signaling Pathway</a>

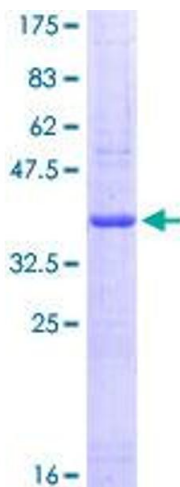
## Application Details

Application Notes:	Optimal working dilution should be determined by the investigator.
Comment:	Preparation method: in vitro, wheat germ expression system Product Quality tested by: 12.5% SDS-PAGE Stained with Coomassie Blue.
Restrictions:	For Research Use only

## Handling

Buffer:	50 mM Tris-HCl, 10 mM reduced Glutathione, pH =8.0 in the elution buffer.
Handling Advice:	Aliquot to avoid repeated freezing and thawing.
Storage:	-80 °C
Storage Comment:	Best use within three months from the date of receipt of this protein.

## Images



**Image 1.**