



[Go to Product page](#)

Datasheet for ABIN1316875

PTPRM Protein (AA 381-479) (GST tag)

1 Image

Overview

Quantity:	10 µg
Target:	PTPRM
Protein Characteristics:	AA 381-479
Origin:	Human
Source:	Wheat germ
Protein Type:	Recombinant
Purification tag / Conjugate:	This PTPRM protein is labelled with GST tag.
Application:	Western Blotting (WB), ELISA, Affinity Purification (AP), Antibody Array (AA)

Product Details

Purpose:	PTPRM (Human) Recombinant Protein (Q01)
Sequence:	RGPRKLEVE VKSRQITIRW EPFGYNVTRC HSYNLTVHYC YQVGGQEQR EEVSWDTENS HPQHTITNLS PYTNVSVKLI LMNPEGRKES QELIVQTDE
Characteristics:	Human PTPRM partial ORF (NP_002836, 381 a.a. - 479 a.a.) recombinant protein with GST-tag at N-terminal.
Purification:	in vitro wheat germ expression system

Target Details

Target:	PTPRM
Alternative Name:	PTPRM (PTPRM Products)

Target Details

Background:	Full Gene Name: protein tyrosine phosphatase, receptor type, M Synonyms: MGC166994,PTPRL1,R-PTP-MU,RPTPM,RPTPU,hR-PTPu
Gene ID:	5797
NCBI Accession:	NM_002845

Application Details

Application Notes:	Optimal working dilution should be determined by the investigator.
Comment:	Preparation method: in vitro, wheat germ expression system Product Quality tested by: 12.5% SDS-PAGE Stained with Coomassie Blue.
Restrictions:	For Research Use only

Handling

Buffer:	50 mM Tris-HCl, 10 mM reduced Glutathione, pH =8.0 in the elution buffer.
Handling Advice:	Aliquot to avoid repeated freezing and thawing.
Storage:	-80 °C
Storage Comment:	Best use within three months from the date of receipt of this protein.

Images

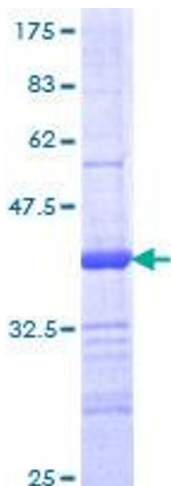


Image 1.