

Datasheet for ABIN1316889
PTRF Protein (AA 1-390) (GST tag)



[Go to Product page](#)

1 Image

Overview

Quantity:	25 µg
Target:	PTRF
Protein Characteristics:	AA 1-390
Origin:	Human
Source:	Wheat germ
Protein Type:	Recombinant
Purification tag / Conjugate:	This PTRF protein is labelled with GST tag.
Application:	ELISA, Western Blotting (WB), Affinity Purification (AP), Antibody Array (AA)

Product Details

Purpose:	PTRF (Human) Recombinant Protein (P01)
Sequence:	MEDPTLYIVE RPLPGYPDAE APEPSSAGAQ AAEEPSGAGS EELIKSDQVN GVLVLSLLDK IIGAVDQIQL TQAQLEERQA EMEGAVQSIQ GELSKLGKAH ATTSNTVSKL LEKVRKVSVN VKTVRGSLE R QAGQIKKLEV NEAELLRRRN FKVMYQDEV KLPKLSISK SLKESEALPE KEGEELGEGE RPEEDAAALE LSSDEAVEVE EVIEESRAER IKRSGLRDVD DFKKAFSKEK MEKTKVRTRE NLEKTRLKTK ENLEKTRHTL EKRMNKLGTR LVPAERREKL KTSRDKLRKS FTPDHVYAR SKTAVYKVPP FTFHVKKIRE GQVEVLKATE MVEVGADDDE GGAERGEAGD LRRGSSPDVH ALLEITEESD AVLVDKSDSD
Characteristics:	Human PTRF full-length ORF (NP_036364.2, 1 a.a. - 390 a.a.) recombinant protein with GST-tag at N-terminal.
Purification:	in vitro wheat germ expression system

Target Details

Target:	PTRF
Alternative Name:	PTRF (PTRF Products)
Background:	Full Gene Name: polymerase I and transcript release factor Synonyms: FKSG13
Gene ID:	284119
NCBI Accession:	NM_012232

Application Details

Application Notes:	Optimal working dilution should be determined by the investigator.
Comment:	Preparation method: in vitro, wheat germ expression system Product Quality tested by: 12.5% SDS-PAGE Stained with Coomassie Blue.
Restrictions:	For Research Use only

Handling

Buffer:	50 mM Tris-HCl, 10 mM reduced Glutathione, pH =8.0 in the elution buffer.
Handling Advice:	Aliquot to avoid repeated freezing and thawing.
Storage:	-80 °C
Storage Comment:	Best use within three months from the date of receipt of this protein.

Images

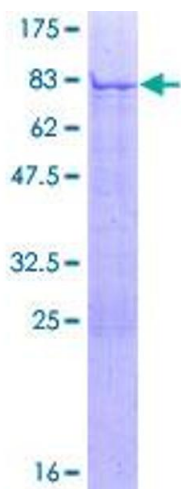


Image 1.