



[Go to Product page](#)

Datasheet for ABIN1316915

PUM2 Protein (AA 701-798) (GST tag)

1 Image

Overview

Quantity:	10 µg
Target:	PUM2
Protein Characteristics:	AA 701-798
Origin:	Human
Source:	Wheat germ
Protein Type:	Recombinant
Purification tag / Conjugate:	This PUM2 protein is labelled with GST tag.
Application:	ELISA, Western Blotting (WB), Affinity Purification (AP), Antibody Array (AA)

Product Details

Purpose:	PUM2 (Human) Recombinant Protein (Q01)
Sequence:	DIMPSGRSRL LEDFRNNRFP NLQLRDLIGH IVEFSQDQHG SRFIQQKLER ATPAERQMVF NEILQAAYQL MTDVFGNYVI QKFFFEFGSLD QKLALATR
Characteristics:	Human PUM2 partial ORF (NP_056132, 701 a.a. - 798 a.a.) recombinant protein with GST-tag at N-terminal.
Purification:	in vitro wheat germ expression system

Target Details

Target:	PUM2
Alternative Name:	PUM2 (PUM2 Products)

Target Details

Background:	Full Gene Name: pumilio homolog 2 (Drosophila) Synonyms: FLJ36528,KIAA0235,MGC138251,MGC138253,PUMH2,PUML2
Gene ID:	23369
NCBI Accession:	NM_015317
Pathways:	Ribonucleoprotein Complex Subunit Organization

Application Details

Application Notes:	Optimal working dilution should be determined by the investigator.
Comment:	Preparation method: in vitro, wheat germ expression system Product Quality tested by: 12.5% SDS-PAGE Stained with Coomassie Blue.
Restrictions:	For Research Use only

Handling

Buffer:	50 mM Tris-HCl, 10 mM reduced Glutathione, pH =8.0 in the elution buffer.
Handling Advice:	Aliquot to avoid repeated freezing and thawing.
Storage:	-80 °C
Storage Comment:	Best use within three months from the date of receipt of this protein.

Images

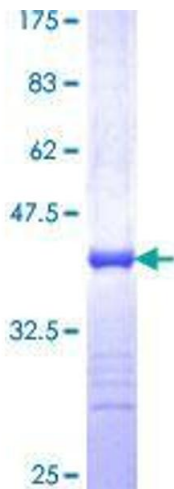


Image 1.