

Datasheet for ABIN1316917  
**PURA Protein (AA 183-292) (GST tag)**



[Go to Product page](#)

1 Image

## Overview

Quantity:	10 µg
Target:	PURA
Protein Characteristics:	AA 183-292
Origin:	Human
Source:	Wheat germ
Protein Type:	Recombinant
Purification tag / Conjugate:	This PURA protein is labelled with GST tag.
Application:	Western Blotting (WB), ELISA, Affinity Purification (AP), Antibody Array (AA)

## Product Details

Purpose:	PURA (Human) Recombinant Protein (Q01)
Sequence:	TQGQTIALPA QGLIEFRDAL AKLIDDYGVE EEP AELPEGT SLTVDNKRFF FDVGSNKYGV FMRVSEVKPT YRNSITVPYK VWAKFGHTFC KYSEETKKIQ EKQREKRAAC
Characteristics:	Human PURA partial ORF ( NP_005850, 183 a.a. - 292 a.a.) recombinant protein with GST-tag at N-terminal.
Purification:	in vitro wheat germ expression system

## Target Details

Target:	PURA
Alternative Name:	PURA ( <a href="#">PURA Products</a> )

## Target Details

Background:	Full Gene Name: purine-rich element binding protein A Synonyms: PUR-ALPHA,PUR1,PURALPHA
Gene ID:	5813
NCBI Accession:	<a href="#">NM_005859</a>

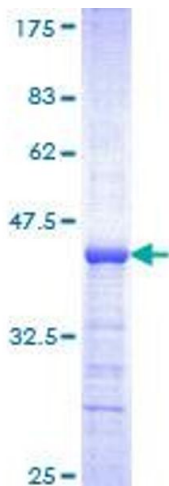
## Application Details

Application Notes:	Optimal working dilution should be determined by the investigator.
Comment:	Preparation method: in vitro, wheat germ expression system Product Quality tested by: 12.5% SDS-PAGE Stained with Coomassie Blue.
Restrictions:	For Research Use only

## Handling

Buffer:	50 mM Tris-HCl, 10 mM reduced Glutathione, pH =8.0 in the elution buffer.
Handling Advice:	Aliquot to avoid repeated freezing and thawing.
Storage:	-80 °C
Storage Comment:	Best use within three months from the date of receipt of this protein.

## Images



**Image 1.**