

Datasheet for ABIN1316931

**Poliovirus Receptor Protein (PVR) (GST tag)**[Go to Product page](#)**1** Image

## Overview

Quantity:	10 µg
Target:	Poliovirus Receptor (PVR)
Origin:	Human
Source:	Wheat germ
Protein Type:	Recombinant
Purification tag / Conjugate:	This Poliovirus Receptor protein is labelled with GST tag.
Application:	Western Blotting (WB), ELISA, Affinity Purification (AP), Antibody Array (AA)

## Product Details

Purpose:	PVR (Human) Recombinant Protein (P01)
Sequence:	MARAMAAAWP LLLVALLVLS WPPPGTGDVV VQAPTQVPGF LGDSVTLPCY LQVPNMEVTH VSQLTWARHG ESGSMAVFHQ TQGPSYSESK RLEFVAARLG AELRNASLRM FGLRVEDEGN YTCLFVTFPQ GRSVDIWLRL VLAKPQNTAE VQKVQLTGEP VPMARCVSTG GRPPAQITWH SDLGGMPNTS QVPGFLSGTV TVTSLWILVP SSQVDGKNVT CKVEHESFEK PQLLTVNLTV YYPPEVSISG YDNNWYLGQN EATLTCDARS NPEPTGYNWS TTMGPLPPFA VAQGAQLLIR PVDKPINTTL ICNVTNALGA RQAELTVQVK EGPPSEHSGM SRNAIFLVL GILVFLILLG IGIYFYWSKC SREVLWHCHL CPSSTEHASA SANGHVSYSY VSRENSSSQD PQTEGTR
Characteristics:	Human PVR full-length ORF ( NP_006496.2, 1 a.a. - 417 a.a.) recombinant protein with GST-tag at N-terminal.
Purification:	in vitro wheat germ expression system

## Target Details

Target:	Poliovirus Receptor (PVR)
Alternative Name:	PVR ( <a href="#">PVR Products</a> )
Background:	Gene: poliovirus receptor Synonyms: CD155, FLJ25946, HVED, NECL5, Necl-5, PVS, TAGE4
Gene ID:	5817
NCBI Accession:	<a href="#">NM_006505</a>
Pathways:	<a href="#">Regulation of Leukocyte Mediated Immunity</a> , <a href="#">Positive Regulation of Immune Effector Process</a> , <a href="#">Cell-Cell Junction Organization</a> , <a href="#">Cancer Immune Checkpoints</a> , <a href="#">SARS-CoV-2 Protein Interactome</a>

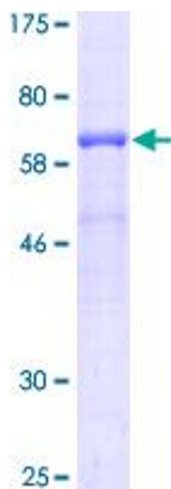
## Application Details

Application Notes:	Optimal working dilution should be determined by the investigator.
Restrictions:	For Research Use only

## Handling

Buffer:	50 mM Tris-HCl, 10 mM reduced Glutathione, pH =8.0 in the elution buffer.
Handling Advice:	Aliquot to avoid repeated freezing and thawing.
Storage:	-80 °C
Storage Comment:	Best use within three months from the date of receipt of this protein.

## Images



**Image 1.**