

Datasheet for ABIN1316933

## Poliovirus Receptor Protein (PVR) (AA 32-141) (GST tag)



[Go to Product page](#)

### 1 Image

#### Overview

Quantity:	10 µg
Target:	Poliovirus Receptor (PVR)
Protein Characteristics:	AA 32-141
Origin:	Human
Source:	Wheat germ
Protein Type:	Recombinant
Purification tag / Conjugate:	This Poliovirus Receptor protein is labelled with GST tag.
Application:	Western Blotting (WB), ELISA, Affinity Purification (AP), Antibody Array (AA)

#### Product Details

Purpose:	PVR (Human) Recombinant Protein (Q01)
Sequence:	QAPTQVPGFL GDSVTLPCYL QVPNMEVTHV SQLTWARHGE SGSMVAFHQ T QGPSYSESKR LEFVAARLGA ELRNASLRMF GLRVEDEGNY TCLFVTFPQG SRSVDIWL RV
Characteristics:	Human PVR partial ORF ( NP_006496, 32 a.a. - 141 a.a.) recombinant protein with GST-tag at N-terminal.
Purification:	in vitro wheat germ expression system

#### Target Details

Target:	Poliovirus Receptor (PVR)
Alternative Name:	PVR ( <a href="#">PVR Products</a> )

## Target Details

Background:	Full Gene Name: poliovirus receptor Synonyms: CD155,FLJ25946,HVED,NECL5,Necl-5,PVS,TAGE4
Gene ID:	5817
NCBI Accession:	<a href="#">NM_006505</a>
Pathways:	<a href="#">Regulation of Leukocyte Mediated Immunity</a> , <a href="#">Positive Regulation of Immune Effector Process</a> , <a href="#">Cell-Cell Junction Organization</a> , <a href="#">Cancer Immune Checkpoints</a> , <a href="#">SARS-CoV-2 Protein Interactome</a>

## Application Details

Application Notes:	Optimal working dilution should be determined by the investigator.
Comment:	Preparation method: in vitro, wheat germ expression system Product Quality tested by: 12.5% SDS-PAGE Stained with Coomassie Blue.
Restrictions:	For Research Use only

## Handling

Buffer:	50 mM Tris-HCl, 10 mM reduced Glutathione, pH =8.0 in the elution buffer.
Handling Advice:	Aliquot to avoid repeated freezing and thawing.
Storage:	-80 °C
Storage Comment:	Best use within three months from the date of receipt of this protein.

## Images

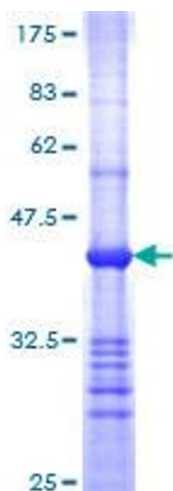


Image 1.