



[Go to Product page](#)

Datasheet for ABIN1316938

PVRL1 Protein (AA 33-142) (GST tag)

1 Image

Overview

Quantity:	10 µg
Target:	PVRL1
Protein Characteristics:	AA 33-142
Origin:	Human
Source:	Wheat germ
Protein Type:	Recombinant
Purification tag / Conjugate:	This PVRL1 protein is labelled with GST tag.
Application:	Western Blotting (WB), ELISA, Affinity Purification (AP), Antibody Array (AA)

Product Details

Purpose:	PVRL1 (Human) Recombinant Protein (Q01)
Sequence:	VQVNDSMYGF IGTDVWLHCS FANPLPSVKI TQVTWQKSTN GSKQNVAIYN PSMGVSVLAP YRERVEFLRP SFTDGTIRLS RLELEDEGVY ICEFATFPTG NRESQLNLTV
Characteristics:	Human PVRL1 partial ORF (NP_002846, 33 a.a. - 142 a.a.) recombinant protein with GST-tag at N-terminal.
Purification:	in vitro wheat germ expression system

Target Details

Target:	PVRL1
Alternative Name:	PVRL1 (PVRL1 Products)

Target Details

Background:	Full Gene Name: poliovirus receptor-related 1 (herpesvirus entry mediator C) Synonyms: CD111,CLPED1,ED4,HIgR,HVEC,MGC142031,MGC16207,OFC7,PRR,PRR1,PVRR,PVRR1,SK-12,nectin-1
Gene ID:	5818
NCBI Accession:	NM_002855
Pathways:	Cell-Cell Junction Organization

Application Details

Application Notes:	Optimal working dilution should be determined by the investigator.
Comment:	Preparation method: in vitro, wheat germ expression system Product Quality tested by: 12.5% SDS-PAGE Stained with Coomassie Blue.
Restrictions:	For Research Use only

Handling

Buffer:	50 mM Tris-HCl, 10 mM reduced Glutathione, pH =8.0 in the elution buffer.
Handling Advice:	Aliquot to avoid repeated freezing and thawing.
Storage:	-80 °C
Storage Comment:	Best use within three months from the date of receipt of this protein.

Images

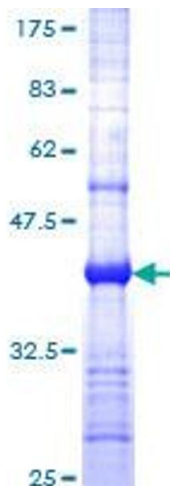


Image 1.