



[Go to Product page](#)

Datasheet for ABIN1316949

PWP1 Protein (AA 1-501) (GST tag)

1 Image

Overview

Quantity:	10 µg
Target:	PWP1
Protein Characteristics:	AA 1-501
Origin:	Human
Source:	Wheat germ
Protein Type:	Recombinant
Purification tag / Conjugate:	This PWP1 protein is labelled with GST tag.
Application:	ELISA, Western Blotting (WB), Affinity Purification (AP), Antibody Array (AA)

Product Details

Purpose:	PWP1 (Human) Recombinant Protein (P01)
Sequence:	<p>MNRSRQVTCV AWRRCGVAKE TPDKVELSKE EVKRLIAEAK EKLQEEGGGS DEEETGSPSE DGMQSARTQA RPREPLEDGD PEDDRTLDDD ELAEYDLDKY DEEGDPDAET LGESLLGLTV YGSNDQDPYV TLKDTEQYER EDFLIKPSDN LIVCGRAEQD QCNLDVHVYN QEEDSFYVHH DILLSAYPLS VEWLNFDPSPP DDSTGNYIAV GNMTVPVIEVW DLDIVDSLEP VFTLGSKLSK KKKKKGGKSS SAEGHTDAVL DLSWNKLIRN VLASASADNT VILWDMSLGK PAASLAVHTD KVQTLQFHFP EAQTLISGSY DKSVALYDCR SPDESHRMWR FSGQIERVTW NHFSPCHFLA STDDGFVYNL DARS DKPIFT LNAHNDEISG LDLSSQIKGC LVTASADKYV KIWDILGDRP SLVHSRDMKM GVLFCSSCCP DLPIFYALRG QKEGLRVWDI STVSSVNEAF GRERLVLGS ARNSSISGPF GSRSSDTPME S</p>
Characteristics:	Human PWP1 full-length ORF (AAH01652, 1 a.a. - 501 a.a.) recombinant protein with GST-tag at N-terminal.

Product Details

Purification: in vitro wheat germ expression system

Target Details

Target: PWP1

Alternative Name: PWP1 ([PWP1 Products](#))

Background: Full Gene Name: PWP1 homolog (*S. cerevisiae*)
Synonyms: IEF-SSP-9502

Gene ID: 11137

Application Details

Application Notes: Optimal working dilution should be determined by the investigator.

Comment: Preparation method: in vitro, wheat germ expression system
Product Quality tested by: 12.5% SDS-PAGE Stained with Coomassie Blue.

Restrictions: For Research Use only

Handling

Buffer: 50 mM Tris-HCl, 10 mM reduced Glutathione, pH =8.0 in the elution buffer.

Handling Advice: Aliquot to avoid repeated freezing and thawing.

Storage: -80 °C

Storage Comment: Best use within three months from the date of receipt of this protein.

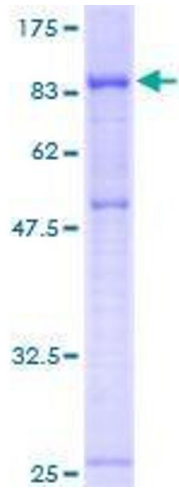


Image 1.