



[Go to Product page](#)

Datasheet for ABIN1316964

Paxillin Protein (PXN) (AA 1-262) (GST tag)

1 Image

Overview

Quantity:	10 µg
Target:	Paxillin (PXN)
Protein Characteristics:	AA 1-262
Origin:	Human
Source:	Wheat germ
Protein Type:	Recombinant
Purification tag / Conjugate:	This Paxillin protein is labelled with GST tag.
Application:	Western Blotting (WB), ELISA, Affinity Purification (AP), Antibody Array (AA)

Product Details

Purpose:	PXN (Human) Recombinant Protein (P02)
Sequence:	MPDTFNRSRSP SVEGSLWAVG TESQGRDWRH LPTITSELSG APRCHTVPCA GSTALQEPGE PQGPPASPSC PEEALAAATWE QPWASEVFGP ERMPPSGAAR SFQEVTEPAV VAVDRQAIFP DTWTLTEEHG LQQRPRPEP GRLGSSSPAS VTTEQLGAKM TERGSVARPT QGPETPRSPE GTTEAATQDG KEQPELPCAM AMGTPSTTER ISTSGQAGTS SHGCWAWPLA GLSVGRSSLT ACSLPLCACL LGQKMLRHCG RT
Characteristics:	Human PXN full-length ORF (XP_001132665.1, 1 a.a. - 262 a.a.) recombinant protein with GST-tag at N-terminal.
Purification:	in vitro wheat germ expression system

Target Details

Target:	Paxillin (PXN)
Alternative Name:	PXN (PXN Products)
Background:	Full Gene Name: paxillin Synonyms: FLJ16691
Gene ID:	5829
NCBI Accession:	XM_001132665
Pathways:	MAPK Signaling , EGFR Signaling Pathway , Response to Growth Hormone Stimulus , Cell-Cell Junction Organization , Maintenance of Protein Location , CXCR4-mediated Signaling Events , Signaling Events mediated by VEGFR1 and VEGFR2 , Signaling of Hepatocyte Growth Factor Receptor , VEGF Signaling

Application Details

Application Notes:	Optimal working dilution should be determined by the investigator.
Comment:	Preparation method: in vitro, wheat germ expression system Product Quality tested by: 12.5% SDS-PAGE Stained with Coomassie Blue.
Restrictions:	For Research Use only

Handling

Buffer:	50 mM Tris-HCl, 10 mM reduced Glutathione, pH =8.0 in the elution buffer.
Handling Advice:	Aliquot to avoid repeated freezing and thawing.
Storage:	-80 °C
Storage Comment:	Best use within three months from the date of receipt of this protein.

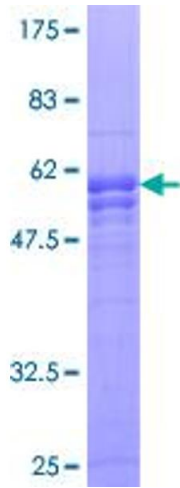


Image 1.