

Datasheet for ABIN1316974
PYCRL Protein (AA 1-274) (GST tag)



[Go to Product page](#)

1 Image

Overview

Quantity:	10 µg
Target:	PYCRL
Protein Characteristics:	AA 1-274
Origin:	Human
Source:	Wheat germ
Protein Type:	Recombinant
Purification tag / Conjugate:	This PYCRL protein is labelled with GST tag.
Application:	ELISA, Western Blotting (WB), Affinity Purification (AP), Antibody Array (AA)

Product Details

Purpose:	PYCRL (Human) Recombinant Protein (P01)
Sequence:	MAAAEPSRRR VGFVGAGRMA GAIAQGLIRA GKVEAQHILA SAPTDRNLCH FQALGCRTTH SNQEVLSQSL LVIFATKPHV LPAVLAEVAP VVTEHILVS VAAGVSLSTL EELLPPNTRV LRVLPNLPCV VQEGAIMAR GRHVGSSETN LLQHLLLEACG RCEEVPEAYV DIHTGLSGSG VAFVCAFSEA LAEGAVKMGM PSSLAHRIAA QTLLGTAKML LHEGQHPAQL RSDVCTPGGT TIYGLHALEQ GGLRAATMSA VEAATCRAKE LSRK
Characteristics:	Human PYCRL full-length ORF (AAH07993.1, 1 a.a. - 274 a.a.) recombinant protein with GST-tag at N-terminal.
Purification:	in vitro wheat germ expression system

Target Details

Target:	PYCRL
Alternative Name:	PYCRL (PYCRL Products)
Background:	Full Gene Name: pyrroline-5-carboxylate reductase-like Synonyms: FLJ13852
Gene ID:	65263

Application Details

Application Notes:	Optimal working dilution should be determined by the investigator.
Comment:	Preparation method: in vitro, wheat germ expression system Product Quality tested by: 12.5% SDS-PAGE Stained with Coomassie Blue.
Restrictions:	For Research Use only

Handling

Buffer:	50 mM Tris-HCl, 10 mM reduced Glutathione, pH =8.0 in the elution buffer.
Handling Advice:	Aliquot to avoid repeated freezing and thawing.
Storage:	-80 °C
Storage Comment:	Best use within three months from the date of receipt of this protein.

Images

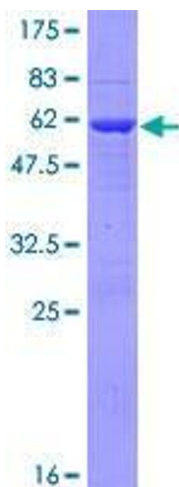


Image 1.