



[Go to Product page](#)

Datasheet for ABIN1316991

PYHIN1 Protein (AA 1-461) (GST tag)

1 Image

Overview

Quantity:	25 µg
Target:	PYHIN1
Protein Characteristics:	AA 1-461
Origin:	Human
Source:	Wheat germ
Protein Type:	Recombinant
Purification tag / Conjugate:	This PYHIN1 protein is labelled with GST tag.
Application:	ELISA, Western Blotting (WB), Affinity Purification (AP), Antibody Array (AA)

Product Details

Purpose:	PYHIN1 (Human) Recombinant Protein (P01)
Sequence:	MANNYKKIVL LKGLEVINDY HFRIVKSLLS NDLKLNPKMK EEYDKIQIAD LMEEKFPGDA GLGKLIIEFFK EIPTLGDIAE TLKREKLKVA NKIESIPVKG IIPSKKTKQK EVYPATPACT PSNRLTAKGA EETLGPQKRK KPSEEETGTK RSKMSKEQTR PSCSAGASTS TAMGRSPPPQ TSSSAPPNTS STESLKPLAN RHATASKNIF REDPIIAMVL NATKVFKEYES SENEQRMMFH ATVATQTQFF HVKVLNINLK RFIKKRIII ISNYSKRNSL LEVNEASSVS EAGPDQTFEV PKDIIRRAKK IPKINILHKQ TSGYIVYGLF MLHTKIVNRK TTIYEIQDKT GSMAVVGKGE CHNIPCEKGD KLRLFCFRLR KRENMSKLMs EMHSFIQIQK NTNQRSHDSR SMALPQEESQ HPKPSEASTT LPESHLKTPQ MPPTTPSSSS FTKVTKDKDI K
Characteristics:	Human PYHIN1 full-length ORF (NP_945147.1, 1 a.a. - 461 a.a.) recombinant protein with GST-tag at N-terminal.

Product Details

Purification: in vitro wheat germ expression system

Target Details

Target: PYHIN1

Alternative Name: PYHIN1 ([PYHIN1 Products](#))

Background: Full Gene Name: pyrin and HIN domain family, member 1
Synonyms: IFIX,MGC23885,RP11-520H16.1

Gene ID: 149628

NCBI Accession: [NM_198929](#)

Application Details

Application Notes: Optimal working dilution should be determined by the investigator.

Comment: Preparation method: in vitro, wheat germ expression system
Product Quality tested by: 12.5% SDS-PAGE Stained with Coomassie Blue.

Restrictions: For Research Use only

Handling

Buffer: 50 mM Tris-HCl, 10 mM reduced Glutathione, pH =8.0 in the elution buffer.

Handling Advice: Aliquot to avoid repeated freezing and thawing.

Storage: -80 °C

Storage Comment: Best use within three months from the date of receipt of this protein.

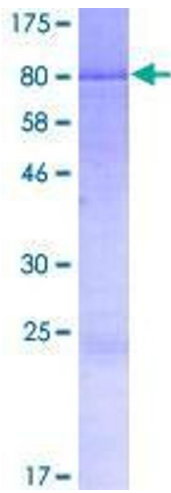


Image 1.