



[Go to Product page](#)

Datasheet for ABIN1316999

## QKI Protein (AA 1-319) (GST tag)

### 1 Image

#### Overview

Quantity:	25 µg
Target:	QKI
Protein Characteristics:	AA 1-319
Origin:	Human
Source:	Wheat germ
Protein Type:	Recombinant
Purification tag / Conjugate:	This QKI protein is labelled with GST tag.
Application:	ELISA, Western Blotting (WB), Affinity Purification (AP), Antibody Array (AA)

#### Product Details

Purpose:	QKI (Human) Recombinant Protein (P01)
Sequence:	MVGEMETKEK PKPTPDYLMQ LMNDKCLMSS LPNFCGIFNH LERLLDEEIS RVRKDMYNDT LNGSTEKRSA ELPDAVGPIV QLQEKLYVPV KEYPDFNFVG RILGPRGLTA KQLEAETGCK IMVRGKGSMR DKKKEEQNRG KPNWEHLNED LHVLTIVEDA QNRAEIKLKR AVEEVKLLV PAAEGEDSLK KMQLMELAIL NGTYRDANIK SPALAFSLAA TAQAAPRIIT GPAPVLPPAA LRTPTPAGPT IMPLIRIQIT AVMPNGTPHP TAAIVPPGPE AGLIYTPYEY PYTLAPATSI LEYPIEPSGV LGMAFPTKG
Characteristics:	Human QKI full-length ORF ( NP_996735.1, 1 a.a. - 319 a.a.) recombinant protein with GST-tag at N-terminal.
Purification:	in vitro wheat germ expression system

## Target Details

Target:	QKI
Alternative Name:	QKI ( <a href="#">QKI Products</a> )
Background:	Full Gene Name: quaking homolog, KH domain RNA binding (mouse) Synonyms: DKFZp586I0923,Hqk,QK,QK1,QK3
Gene ID:	9444
NCBI Accession:	<a href="#">NM_206853</a>

## Application Details

Application Notes:	Optimal working dilution should be determined by the investigator.
Comment:	Preparation method: in vitro, wheat germ expression system Product Quality tested by: 12.5% SDS-PAGE Stained with Coomassie Blue.
Restrictions:	For Research Use only

## Handling

Buffer:	50 mM Tris-HCl, 10 mM reduced Glutathione, pH =8.0 in the elution buffer.
Handling Advice:	Aliquot to avoid repeated freezing and thawing.
Storage:	-80 °C
Storage Comment:	Best use within three months from the date of receipt of this protein.

## Images

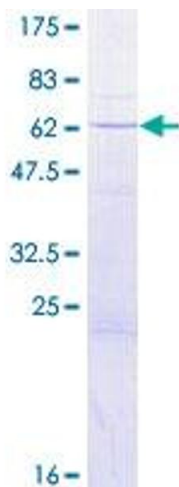


Image 1.