



[Go to Product page](#)

Datasheet for ABIN1317000
QPCT Protein (AA 1-361) (GST tag)

1 Image

Overview

Quantity:	10 µg
Target:	QPCT
Protein Characteristics:	AA 1-361
Origin:	Human
Source:	Wheat germ
Protein Type:	Recombinant
Purification tag / Conjugate:	This QPCT protein is labelled with GST tag.
Application:	Western Blotting (WB), ELISA, Affinity Purification (AP), Antibody Array (AA)

Product Details

Purpose:	QPCT (Human) Recombinant Protein (P01)
Sequence:	MAGGRHRRVV GTLHLLLLVA ALPWASRGVS PSASAWPEEK NYHQPAILNS SALRQIAEGT SISEMWQNDL QPLLIERYPG SPGSYAARQH IMQRIQLQA DWVLEIDTFL SQTPYGYRSF SNIISTLNPT AKRHLVLACH YDSKYFSHWN NRVFVGATDS AVPCAMMLEL ARALDKKLLS LKTVSDSKPD LSLQLIFFDG EEAFLHWSPQ DSLYGSRHLL AKMASTPHPP GARGTSQLHG MDLLVLLDLI GAPNPTFPNF FPNSARWFER LQAIEHELHE LGLLKDHSLE GRYFQNYSYG GVIQDDHIPF LRRGVPVLHL IPSPFPEVWH TMDDNEENLD ESTIDNLNKI LQVFVLEYLH L
Characteristics:	Human QPCT full-length ORF (NP_036545.1, 1 a.a. - 361 a.a.) recombinant protein with GST-tag at N-terminal.
Purification:	in vitro wheat germ expression system

Target Details

Target:	QPCT
Alternative Name:	QPCT (QPCT Products)
Background:	Full Gene Name: glutaminy-peptide cyclotransferase Synonyms: GCT,QC
Gene ID:	25797
NCBI Accession:	NM_012413

Application Details

Application Notes:	Optimal working dilution should be determined by the investigator.
Comment:	Preparation method: in vitro, wheat germ expression system Product Quality tested by: 12.5% SDS-PAGE Stained with Coomassie Blue.
Restrictions:	For Research Use only

Handling

Buffer:	50 mM Tris-HCl, 10 mM reduced Glutathione, pH =8.0 in the elution buffer.
Handling Advice:	Aliquot to avoid repeated freezing and thawing.
Storage:	-80 °C
Storage Comment:	Best use within three months from the date of receipt of this protein.

Images

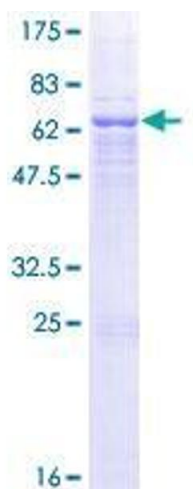


Image 1.