



[Go to Product page](#)

Datasheet for ABIN1317074

## RAB24 Protein (AA 1-203) (GST tag)

### 1 Image

#### Overview

Quantity:	10 µg
Target:	RAB24
Protein Characteristics:	AA 1-203
Origin:	Human
Source:	Wheat germ
Protein Type:	Recombinant
Purification tag / Conjugate:	This RAB24 protein is labelled with GST tag.
Application:	ELISA, Western Blotting (WB), Affinity Purification (AP), Antibody Array (AA)

#### Product Details

Purpose:	RAB24 (Human) Recombinant Protein (P01)
Sequence:	MSGQRVDVKV VMLGKEYVVK TSLVERYVHD RFLVGPYQNT IGAAFVAKVM SVGDRTVTLG IWDTAGSERY EAMSRIYYRG AKAAIVCYDL TDSSSFERAK FWVKELRSLE EGCQIYLCGT KSDLLEEDRR RRRVDFHDVQ DYADNIKAQL FETSSKTGQS VDELFQKVAE DYVSVAAFQV MTEDKGVDLG QKPNPYFYSC CHH
Characteristics:	Human RAB24 full-length ORF ( AAH15534, 1 a.a. - 203 a.a.) recombinant protein with GST-tag at N-terminal.
Purification:	in vitro wheat germ expression system

#### Target Details

Target:	RAB24
---------	-------

## Target Details

---

Alternative Name:	RAB24 ( <a href="#">RAB24 Products</a> )
Background:	Full Gene Name: RAB24, member RAS oncogene family Synonyms:
Gene ID:	53917

## Application Details

---

Application Notes:	Optimal working dilution should be determined by the investigator.
Comment:	Preparation method: in vitro, wheat germ expression system Product Quality tested by: 12.5% SDS-PAGE Stained with Coomassie Blue.
Restrictions:	For Research Use only

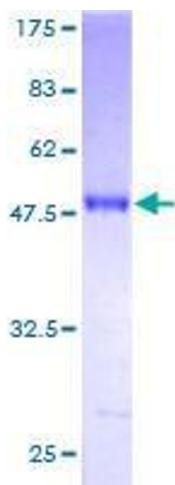
## Handling

---

Buffer:	50 mM Tris-HCl, 10 mM reduced Glutathione, pH =8.0 in the elution buffer.
Handling Advice:	Aliquot to avoid repeated freezing and thawing.
Storage:	-80 °C
Storage Comment:	Best use within three months from the date of receipt of this protein.

## Images

---



**Image 1.**