

Datasheet for ABIN1317094 **RAB2B Protein (GST tag)**



[Go to Product page](#)

1 Image

Overview

Quantity:	10 µg
Target:	RAB2B
Origin:	Human
Source:	Wheat germ
Protein Type:	Recombinant
Purification tag / Conjugate:	This RAB2B protein is labelled with GST tag.
Application:	ELISA, Western Blotting (WB), Affinity Purification (AP), Antibody Array (AA)

Product Details

Purpose:	RAB2B (Human) Recombinant Protein (P01)
Sequence:	MTYAYLFKYI IIGDTGVGKS CLLLQFTDKR FQPVHDLTIG VEFGARMVNI DGKQIKLQIW DTAGQESFRS ITRSYYRGAA GALLVYDITR RETFNHLTSW LEDARQHSSS NMVIMLIGNK SDLESRRDVK REEGEAFARE HGLIFMETS A KTACNVEEAF INTAKEIYRK IQQGLFDVHN EANGIKIGPQ QSISTSVGPS ASQRNSRDIG SNSGCC
Characteristics:	Human RAB2B full-length ORF (NP_116235.2, 1 a.a. - 216 a.a.) recombinant protein with GST-tag at N-terminal.
Purification:	in vitro wheat germ expression system

Target Details

Target:	RAB2B
Alternative Name:	RAB2B (RAB2B Products)

Target Details

Background: Gene: RAB2B, member RAS oncogene family
Synonyms: FLJ14824

Gene ID: 84932

NCBI Accession: [NM_032846](#)

Application Details

Application Notes: Optimal working dilution should be determined by the investigator.

Restrictions: For Research Use only

Handling

Buffer: 50 mM Tris-HCl, 10 mM reduced Glutathione, pH =8.0 in the elution buffer.

Handling Advice: Aliquot to avoid repeated freezing and thawing.

Storage: -80 °C

Storage Comment: Best use within three months from the date of receipt of this protein.

Images

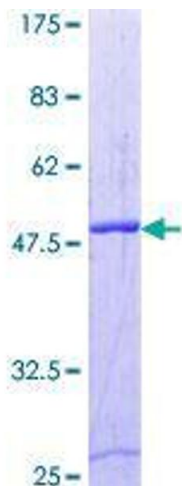


Image 1.