



[Go to Product page](#)

Datasheet for ABIN1317113

RAB33B Protein (AA 117-206) (GST tag)

1 Image

Overview

Quantity:	10 µg
Target:	RAB33B
Protein Characteristics:	AA 117-206
Origin:	Human
Source:	Wheat germ
Protein Type:	Recombinant
Purification tag / Conjugate:	This RAB33B protein is labelled with GST tag.
Application:	ELISA, Western Blotting (WB), Affinity Purification (AP), Antibody Array (AA)

Product Details

Purpose:	RAB33B (Human) Recombinant Protein (Q01)
Sequence:	TNMAFHSPLP SWIEECKQHL LANDIPRILV GNKCDLRSAL QVPTDLAQKF ADTHSMPLFE TSAKNPNDND HVEAIFMTLA HKLKSHKPLM
Characteristics:	Human RAB33B partial ORF (NP_112586, 117 a.a. - 206 a.a.) recombinant protein with GST-tag at N-terminal.
Purification:	in vitro wheat germ expression system

Target Details

Target:	RAB33B
Alternative Name:	RAB33B (RAB33B Products)

Target Details

Background:	Full Gene Name: RAB33B, member RAS oncogene family Synonyms: DKFZp434G099,MGC138182
Gene ID:	83452
NCBI Accession:	NM_031296

Application Details

Application Notes:	Optimal working dilution should be determined by the investigator.
Comment:	Preparation method: in vitro, wheat germ expression system Product Quality tested by: 12.5% SDS-PAGE Stained with Coomassie Blue.
Restrictions:	For Research Use only

Handling

Buffer:	50 mM Tris-HCl, 10 mM reduced Glutathione, pH =8.0 in the elution buffer.
Handling Advice:	Aliquot to avoid repeated freezing and thawing.
Storage:	-80 °C
Storage Comment:	Best use within three months from the date of receipt of this protein.

Images

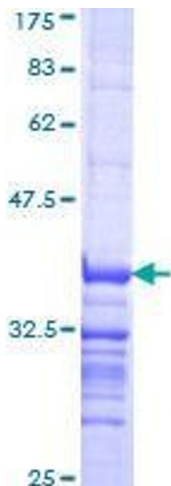


Image 1.