

Datasheet for ABIN1317147

RAB3IL1 Protein (AA 1-382) (GST tag)



[Go to Product page](#)

1 Image

Overview

Quantity:	25 µg
Target:	RAB3IL1
Protein Characteristics:	AA 1-382
Origin:	Human
Source:	Wheat germ
Protein Type:	Recombinant
Purification tag / Conjugate:	This RAB3IL1 protein is labelled with GST tag.
Application:	ELISA, Western Blotting (WB), Affinity Purification (AP), Antibody Array (AA)

Product Details

Purpose:	RAB3IL1 (Human) Recombinant Protein (P01)
Sequence:	MWSGPPQPDQ GLPPPLAAVP VPWKSTDPCQ GHRESPGALV ETSAGEEAQG QEGPAAAQLD VLRLRSSME IREKGSEFLK EELHRAQKEL KLKDEECERL SKVREQLEQE LEELTASLFE EAHKMVREAN MKQAASEKQL KEARGKIDML QAEVTALKTL VITSTPASPEN RELHPQLLSP TKAGPRKGHS RHKSTSSTLC PAVCPAAGHT LTPDREGKEV DTILFAEFQA WRESPTLDKT CPFLERVYRE DVGPCLDFTM QELSVLVRAA VEDNTLTIEP VASQTLPTVK VAEVDCSSTN TCALSGLTRT CRHRIRLGDS KSHYYISPSS RARITAVCNF FTYIRYIQQG LVRQDAEPMF WEIMRLRKEM SLAKLGFFPQ EA
Characteristics:	Human RAB3IL1 full-length ORF (NP_037533.2, 1 a.a. - 382 a.a.) recombinant protein with GST-tag at N-terminal.
Purification:	in vitro wheat germ expression system

Target Details

Target:	RAB3IL1
Alternative Name:	RAB3IL1 (RAB3IL1 Products)
Background:	Full Gene Name: RAB3A interacting protein (rabin3)-like 1 Synonyms: GRAB
Gene ID:	5866
NCBI Accession:	NM_013401

Application Details

Application Notes:	Optimal working dilution should be determined by the investigator.
Comment:	Preparation method: in vitro, wheat germ expression system Product Quality tested by: 12.5% SDS-PAGE Stained with Coomassie Blue.
Restrictions:	For Research Use only

Handling

Buffer:	50 mM Tris-HCl, 10 mM reduced Glutathione, pH =8.0 in the elution buffer.
Handling Advice:	Aliquot to avoid repeated freezing and thawing.
Storage:	-80 °C
Storage Comment:	Best use within three months from the date of receipt of this protein.

Images

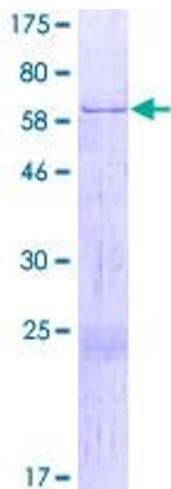


Image 1.