



[Go to Product page](#)

Datasheet for ABIN1317150  
**RAB3IP Protein (AA 155-253) (GST tag)**

1 Image

Overview

Quantity:	10 µg
Target:	RAB3IP
Protein Characteristics:	AA 155-253
Origin:	Human
Source:	Wheat germ
Protein Type:	Recombinant
Purification tag / Conjugate:	This RAB3IP protein is labelled with GST tag.
Application:	ELISA, Western Blotting (WB), Affinity Purification (AP), Antibody Array (AA)

Product Details

Purpose:	RAB3IP (Human) Recombinant Protein (Q01)
Sequence:	QPIRFVKASA VECGGPKKCA LTGQSKSCKH RIKLGDSSNY YYISPFRCRYR ITSVCNFFTY IRYIQQLVK QQDVDQMFWE VMQLRKEMSL AKLGYFKEE
Characteristics:	Human RAB3IP partial ORF ( NP_001019818, 155 a.a. - 253 a.a.) recombinant protein with GST-tag at N-terminal.
Purification:	in vitro wheat germ expression system

Target Details

Target:	RAB3IP
Alternative Name:	RAB3IP ( <a href="#">RAB3IP Products</a> )

## Target Details

Background:	Full Gene Name: RAB3A interacting protein (rabin3) Synonyms: FLJ14660,FLJ22548,MGC71495,RABIN3
Gene ID:	117177
NCBI Accession:	<a href="#">NM_001024647</a>

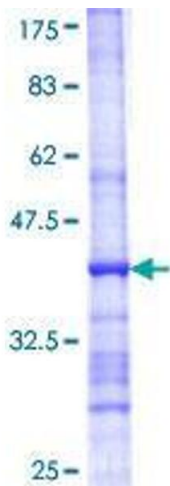
## Application Details

Application Notes:	Optimal working dilution should be determined by the investigator.
Comment:	Preparation method: in vitro, wheat germ expression system Product Quality tested by: 12.5% SDS-PAGE Stained with Coomassie Blue.
Restrictions:	For Research Use only

## Handling

Buffer:	50 mM Tris-HCl, 10 mM reduced Glutathione, pH =8.0 in the elution buffer.
Handling Advice:	Aliquot to avoid repeated freezing and thawing.
Storage:	-80 °C
Storage Comment:	Best use within three months from the date of receipt of this protein.

## Images



**Image 1.**