

Datasheet for ABIN1317152
RAB40A Protein (GST tag)



[Go to Product page](#)

1 Image

Overview

Quantity:	10 µg
Target:	RAB40A
Origin:	Human
Source:	Wheat germ
Protein Type:	Recombinant
Purification tag / Conjugate:	This RAB40A protein is labelled with GST tag.
Application:	ELISA, Western Blotting (WB), Affinity Purification (AP), Antibody Array (AA)

Product Details

Purpose:	RAB40A (Human) Recombinant Protein (P01)
Sequence:	MSAPGSPDQA YDFLLKFLLV GDRDVGKSEI LESLQDGAAE SPYSHLGGID YKTTTILLDG QRVKLKLWDT SGQGRFCTIF RSYSRGAQGV ILVYDIANRW SFEGMDRWIK KIEEHAPGVP KILVGNRLHL AFKRQVPREQ AQAYAERLGV TFFEVSPLCN FNIIESFTEL ARIVLLRHRM NWLGRPSKVL SLQDLCCRTI VSCTPVHLVD KLPLPSTLRS HLKSFSMAKG LNARMMRGLS YSLTTSSTHK SSLCKVEIVC PPQSPPKNCT RNSCKIS
Characteristics:	Human RAB40A full-length ORF (NP_543155.2, 1 a.a. - 277 a.a.) recombinant protein with GST-tag at N-terminal.
Purification:	in vitro wheat germ expression system

Target Details

Target:	RAB40A
---------	--------

Target Details

Alternative Name:	RAB40A (RAB40A Products)
Background:	Gene: RAB40A, member RAS oncogene family Synonyms: MGC142061, RAR2A, Rar-2
Gene ID:	142684
NCBI Accession:	NM_080879

Application Details

Application Notes:	Optimal working dilution should be determined by the investigator.
Restrictions:	For Research Use only

Handling

Buffer:	50 mM Tris-HCl, 10 mM reduced Glutathione, pH =8.0 in the elution buffer.
Handling Advice:	Aliquot to avoid repeated freezing and thawing.
Storage:	-80 °C
Storage Comment:	Best use within three months from the date of receipt of this protein.

Images

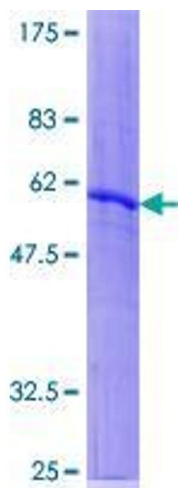


Image 1.