



Datasheet for ABIN1317158  
**RAB40B Protein (AA 179-278) (GST tag)**



[Go to Product page](#)

1 Image

Overview

Quantity:	10 µg
Target:	RAB40B
Protein Characteristics:	AA 179-278
Origin:	Human
Source:	Wheat germ
Protein Type:	Recombinant
Purification tag / Conjugate:	This RAB40B protein is labelled with GST tag.
Application:	ELISA, Western Blotting (WB), Affinity Purification (AP), Antibody Array (AA)

Product Details

Purpose:	RAB40B (Human) Recombinant Protein (Q01)
Sequence:	GMDRLWRPSK VLSLQDLCCR AVVSCTPVHL VDKLPLPIAL RSHLKSFSMA NGLNARMMHG GSYSLTTSST HKRSSLRKVK LVRPPQSPPK NCTRNSCKIS
Characteristics:	Human RAB40B partial ORF ( AAH18039, 179 a.a. - 278 a.a.) recombinant protein with GST-tag at N-terminal.
Purification:	in vitro wheat germ expression system

Target Details

Target:	RAB40B
Alternative Name:	RAB40B ( <a href="#">RAB40B Products</a> )

## Target Details

Background: Gene: RAB40B, member RAS oncogene family  
Synonyms: FLJ42385, RAR, SEC4L

Gene ID: 10966

## Application Details

Application Notes: Optimal working dilution should be determined by the investigator.

Restrictions: For Research Use only

## Handling

Buffer: 50 mM Tris-HCl, 10 mM reduced Glutathione, pH =8.0 in the elution buffer.

Handling Advice: Aliquot to avoid repeated freezing and thawing.

Storage: -80 °C

Storage Comment: Best use within three months from the date of receipt of this protein.

## Images

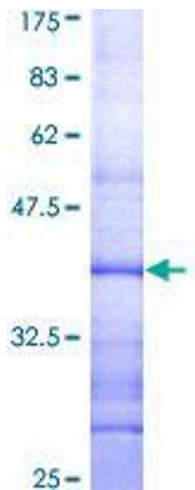


Image 1.