

Datasheet for ABIN1317169  
**RAB43 Protein (AA 1-212) (GST tag)**



[Go to Product page](#)

1 Image

## Overview

Quantity:	10 µg
Target:	RAB43
Protein Characteristics:	AA 1-212
Origin:	Human
Source:	Wheat germ
Protein Type:	Recombinant
Purification tag / Conjugate:	This RAB43 protein is labelled with GST tag.
Application:	ELISA, Western Blotting (WB), Affinity Purification (AP), Antibody Array (AA)

## Product Details

Purpose:	RAB43 (Human) Recombinant Protein (P01)
Sequence:	MAGPGPGPGD PDEQYDFLFK LVLVGDA SVG KTCVVQRFKT GAFSERQGST IGVDFTMKTL EIQGKRVKLQ IWDTAGQERF RTITQSYYS ANGAILAYDI TKRSSFLSVP HWIEDVRKYA GSNIVQLLIG NKSDLSELRE VSLAEASLA EHYDILCAIE TSAKDSSNVE EAFLRVATEL IMRHGGPLFS EKSPDHIQLN SKDIGEGWGC GC
Characteristics:	Human RAB43 full-length ORF ( NP_940892.1, 1 a.a. - 212 a.a.) recombinant protein with GST-tag at N-terminal.
Purification:	in vitro wheat germ expression system

## Target Details

Target:	RAB43
---------	-------

## Target Details

Alternative Name:	RAB43 ( <a href="#">RAB43 Products</a> )
Background:	Full Gene Name: RAB43, member RAS oncogene family Synonyms: ISY1,MGC90481,RAB11B,RAB41
Gene ID:	339122
NCBI Accession:	<a href="#">NM_198490</a>

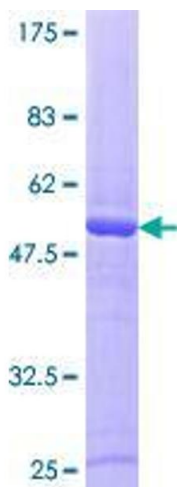
## Application Details

Application Notes:	Optimal working dilution should be determined by the investigator.
Comment:	Preparation method: in vitro, wheat germ expression system Product Quality tested by: 12.5% SDS-PAGE Stained with Coomassie Blue.
Restrictions:	For Research Use only

## Handling

Buffer:	50 mM Tris-HCl, 10 mM reduced Glutathione, pH =8.0 in the elution buffer.
Handling Advice:	Aliquot to avoid repeated freezing and thawing.
Storage:	-80 °C
Storage Comment:	Best use within three months from the date of receipt of this protein.

## Images



**Image 1.**