



[Go to Product page](#)

Datasheet for ABIN1317171

RAB43 Protein (AA 113-210) (GST tag)

1 Image

Overview

Quantity:	10 µg
Target:	RAB43
Protein Characteristics:	AA 113-210
Origin:	Human
Source:	Wheat germ
Protein Type:	Recombinant
Purification tag / Conjugate:	This RAB43 protein is labelled with GST tag.
Application:	ELISA, Western Blotting (WB), Affinity Purification (AP), Antibody Array (AA)

Product Details

Purpose:	RAB43 (Human) Recombinant Protein (Q01)
Sequence:	IEDVRKYAGS NIVQLLIGNK SDLSELREVS LAEAQSLAEH YDILCAIETS AKDSSNVEEA FLRVATELIM RHGGPLFSEK SPDHIQLNSK DIGEGWGC
Characteristics:	Human RAB43 partial ORF (NP_940892, 113 a.a. - 210 a.a.) recombinant protein with GST-tag at N-terminal.
Purification:	in vitro wheat germ expression system

Target Details

Target:	RAB43
Alternative Name:	RAB43 (RAB43 Products)

Target Details

Background:	Full Gene Name: RAB43, member RAS oncogene family Synonyms: ISY1,MGC90481,RAB11B,RAB41
Gene ID:	339122
NCBI Accession:	NM_198490

Application Details

Application Notes:	Optimal working dilution should be determined by the investigator.
Comment:	Preparation method: in vitro, wheat germ expression system Product Quality tested by: 12.5% SDS-PAGE Stained with Coomassie Blue.
Restrictions:	For Research Use only

Handling

Buffer:	50 mM Tris-HCl, 10 mM reduced Glutathione, pH =8.0 in the elution buffer.
Handling Advice:	Aliquot to avoid repeated freezing and thawing.
Storage:	-80 °C
Storage Comment:	Best use within three months from the date of receipt of this protein.

Images

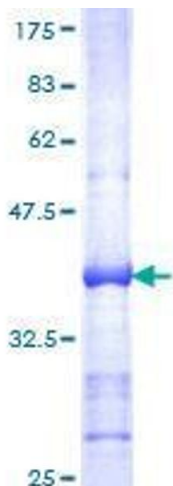


Image 1.