



[Go to Product page](#)

Datasheet for ABIN1317199

RAB7L1 Protein (AA 1-203) (GST tag)

1 Image

Overview

Quantity:	10 µg
Target:	RAB7L1
Protein Characteristics:	AA 1-203
Origin:	Human
Source:	Wheat germ
Protein Type:	Recombinant
Purification tag / Conjugate:	This RAB7L1 protein is labelled with GST tag.
Application:	ELISA, Western Blotting (WB), Affinity Purification (AP), Antibody Array (AA)

Product Details

Purpose:	RAB7L1 (Human) Recombinant Protein (P01)
Sequence:	MGSRDHLFKV LVVGDAAVGK TSLVQRYSD SFSKHYKSTV GVDFALKVLQ WSDYEIVRLQ LWDIAGQERF TSMTRLYYRD ASACVIMFDV TNATTFNSQ RWKQDLDSKL TLPNGEPVPC LLLANKCDLS PWAVSRDQID RFSKENGFTG WTETSVKENK NINEAMRVLI EKMMRNSTED IMSLSTQGDY INLQTKSSSW SCC
Characteristics:	Human RAB7L1 full-length ORF (AAH02585, 1 a.a. - 203 a.a.) recombinant protein with GST-tag at N-terminal.
Purification:	in vitro wheat germ expression system

Target Details

Target:	RAB7L1
---------	--------

Target Details

Alternative Name:	RAB7L1 (RAB7L1 Products)
Background:	Full Gene Name: RAB7, member RAS oncogene family-like 1 Synonyms: DKFZp686P1051,RAB7L
Gene ID:	8934

Application Details

Application Notes:	Optimal working dilution should be determined by the investigator.
Comment:	Preparation method: in vitro, wheat germ expression system Product Quality tested by: 12.5% SDS-PAGE Stained with Coomassie Blue.
Restrictions:	For Research Use only

Handling

Buffer:	50 mM Tris-HCl, 10 mM reduced Glutathione, pH =8.0 in the elution buffer.
Handling Advice:	Aliquot to avoid repeated freezing and thawing.
Storage:	-80 °C
Storage Comment:	Best use within three months from the date of receipt of this protein.

Images

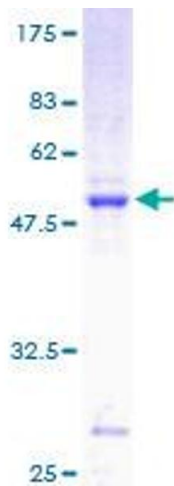


Image 1.