

Datasheet for ABIN1317213 **RAB9B Protein (GST tag)**



[Go to Product page](#)

1 Image

Overview

Quantity:	10 µg
Target:	RAB9B
Origin:	Human
Source:	Wheat germ
Protein Type:	Recombinant
Purification tag / Conjugate:	This RAB9B protein is labelled with GST tag.
Application:	ELISA, Western Blotting (WB), Affinity Purification (AP), Antibody Array (AA)

Product Details

Purpose:	RAB9B (Human) Recombinant Protein (P01)
Sequence:	MSGKSLLLKV ILLGDGGVGK SSLMNRYVTN KFDSQAFHTI GVEFLNRDLE VDGRFVTLQI WDTAGQERFK SLRTPFYRGA DCCLLTFSVD DRQSFENLGN WQKEFIYYAD VKDPEHFPPV VLGNKVDKED RQVTTEEAQT WCMENGDYPY LETSAKDDTN VTVAFEEAVR QVLAVEEQLE HCMLGHTIDL NSGSKAGSSC C
Characteristics:	Human RAB9B full-length ORF (NP_057454.1, 1 a.a. - 201 a.a.) recombinant protein with GST-tag at N-terminal.
Purification:	in vitro wheat germ expression system

Target Details

Target:	RAB9B
Alternative Name:	RAB9B (RAB9B Products)

Target Details

Background: Gene: RAB9B, member RAS oncogene family
Synonyms: RAB9L

Gene ID: 51209

NCBI Accession: [NM_016370](#)

Application Details

Application Notes: Optimal working dilution should be determined by the investigator.

Restrictions: For Research Use only

Handling

Buffer: 50 mM Tris-HCl, 10 mM reduced Glutathione, pH =8.0 in the elution buffer.

Handling Advice: Aliquot to avoid repeated freezing and thawing.

Storage: -80 °C

Storage Comment: Best use within three months from the date of receipt of this protein.

Images

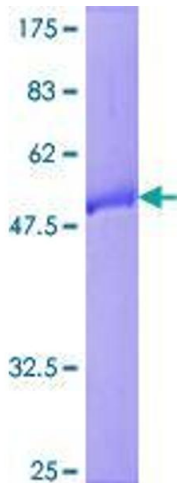


Image 1.