



[Go to Product page](#)

Datasheet for ABIN1317238

RABGGTA Protein (AA 1-567) (GST tag)

1 Image

Overview

Quantity:	10 µg
Target:	RABGGTA
Protein Characteristics:	AA 1-567
Origin:	Human
Source:	Wheat germ
Protein Type:	Recombinant
Purification tag / Conjugate:	This RABGGTA protein is labelled with GST tag.
Application:	ELISA, Western Blotting (WB), Affinity Purification (AP), Antibody Array (AA)

Product Details

Purpose:	RABGGTA (Human) Recombinant Protein (P01)
Sequence:	MHGRLKVKTS EEQAEAKRLE REQKLKLYQS ATQAVFQKRQ AGELDESVLE LTSQILGANP DFATLWNCRR EVLQQLETQK SPEELAALVK AELGFLESCL RVNPKSYGTW HHRCWLLGRL PEPNWTRELE LCARFLEVDE RNFHCWDYRR FVATQAAVPP AEELAFDLSL ITRNFSNYSS WHYRSCLLPQ LHPQPDSGPQ GRLPEDVLLK EELVQNAFF TDPNDQSAWF YHRWLLGRAD PQDALRCLHV SRDEACTVS FSRPLLVGSR MEILLMVDD SPLIVEWRTP DGRNRPSHVW LCDLPAASLN DQLPQHTFRV IWTAGDVQKE CVLLKGRQEG WCRDSTTDEQ LFRCELSVEK STVLQSELES CKELQEPE NKWCLLTII LMRALDPLLY EKETLQYFQT LKAVDPMRAT YLLDLRSKFL LENSVLKMEY AEVRVHLAH KDLTVLCHLE QLLLVTDL SHNRLRTLPP ALAALRCLEV LQASDNAIES LDGVTNLPRL QELLLCNNRL QQPAVLQPLA SCPRLVLLNL QGNPLCQAVG ILEQLAELLP SVSSVLT
Characteristics:	Human RABGGTA full-length ORF (NP_004572.3, 1 a.a. - 567 a.a.) recombinant protein with

Product Details

GST-tag at N-terminal.

Purification: in vitro wheat germ expression system

Target Details

Target: RABGGTA

Alternative Name: RABGGTA ([RABGGTA Products](#))

Background: Full Gene Name: Rab geranylgeranyltransferase, alpha subunit
Synonyms: PTAR3

Gene ID: 5875

NCBI Accession: [NM_004581](#)

Application Details

Application Notes: Optimal working dilution should be determined by the investigator.

Comment: Preparation method: in vitro, wheat germ expression system
Product Quality tested by: 12.5% SDS-PAGE Stained with Coomassie Blue.

Restrictions: For Research Use only

Handling

Buffer: 50 mM Tris-HCl, 10 mM reduced Glutathione, pH =8.0 in the elution buffer.

Handling Advice: Aliquot to avoid repeated freezing and thawing.

Storage: -80 °C

Storage Comment: Best use within three months from the date of receipt of this protein.

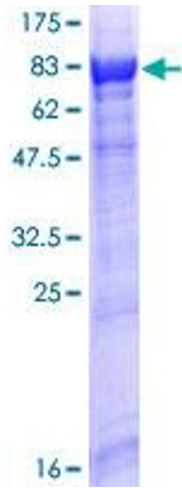


Image 1.