



[Go to Product page](#)

Datasheet for ABIN1317242
RABIF Protein (AA 1-123) (GST tag)

1 Image

Overview

| | |
|-------------------------------|---|
| Quantity: | 10 µg |
| Target: | RABIF |
| Protein Characteristics: | AA 1-123 |
| Origin: | Human |
| Source: | Wheat germ |
| Protein Type: | Recombinant |
| Purification tag / Conjugate: | This RABIF protein is labelled with GST tag. |
| Application: | ELISA, Western Blotting (WB), Affinity Purification (AP), Antibody Array (AA) |

Product Details

| | |
|------------------|---|
| Purpose: | RABIF (Human) Recombinant Protein (P01) |
| Sequence: | MEPAEQPSEL VSAEGRNRKA VLCQRCGSRV LQPGTALFSR RQLFLPSMRK KPALSDG SNP DGDLLQEHWL VEDMFIFENV GFTKDVGNIK FLVCADCEIG PIGWHCLDDK NSFYVALERV SHE |
| Characteristics: | Human RABIF full-length ORF (AAH18488, 1 a.a. - 123 a.a.) recombinant protein with GST-tag at N-terminal. |
| Purification: | in vitro wheat germ expression system |

Target Details

| | |
|-------------------|--|
| Target: | RABIF |
| Alternative Name: | RABIF (RABIF Products) |

Target Details

Background: Full Gene Name: RAB interacting factor
Synonyms: MSS4,RASGFR3,RASGRF3

Gene ID: 5877

Application Details

Application Notes: Optimal working dilution should be determined by the investigator.

Comment: Preparation method: in vitro, wheat germ expression system
Product Quality tested by: 12.5% SDS-PAGE Stained with Coomassie Blue.

Restrictions: For Research Use only

Handling

Buffer: 50 mM Tris-HCl, 10 mM reduced Glutathione, pH =8.0 in the elution buffer.

Handling Advice: Aliquot to avoid repeated freezing and thawing.

Storage: -80 °C

Storage Comment: Best use within three months from the date of receipt of this protein.

Images

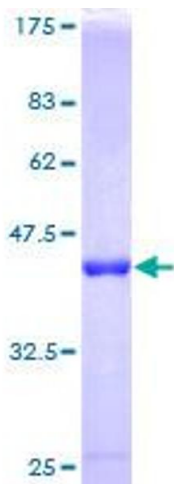


Image 1.