



[Go to Product page](#)

Datasheet for ABIN1317248

RABL3 Protein (AA 1-236) (GST tag)

1 Image

Overview

Quantity:	10 µg
Target:	RABL3
Protein Characteristics:	AA 1-236
Origin:	Human
Source:	Wheat germ
Protein Type:	Recombinant
Purification tag / Conjugate:	This RABL3 protein is labelled with GST tag.
Application:	ELISA, Western Blotting (WB), Affinity Purification (AP), Antibody Array (AA)

Product Details

Purpose:	RABL3 (Human) Recombinant Protein (P01)
Sequence:	MASLDRVKVL VLGDSGVGKS SLVHLLCQNQ VLGNPSTVVG CSVDVRVHDY KEGTPEEKTC YIELWDVGGG VGSASSVKST RAVFYNSVNG IIFVHDLTNK KSSQNLRRWS LEALNRDLVP TGVLVNTGDY DQEQFADNQI PLLVIGTKLD QIHETKRHEV LTTTAFLAED FNPEEINLDC TNPRYLAAGS SNAVKLSRFF DKVIEKRYFL REGNQIPGFP DRKRFAGTL KSLHYD
Characteristics:	Human RABL3 full-length ORF (AAH20832, 1 a.a. - 236 a.a.) recombinant protein with GST-tag at N-terminal.
Purification:	in vitro wheat germ expression system

Target Details

Target:	RABL3
---------	-------

Target Details

Alternative Name:	RABL3 (RABL3 Products)
Background:	Full Gene Name: RAB, member of RAS oncogene family-like 3 Synonyms: MGC23920
Gene ID:	285282

Application Details

Application Notes:	Optimal working dilution should be determined by the investigator.
Comment:	Preparation method: in vitro, wheat germ expression system Product Quality tested by: 12.5% SDS-PAGE Stained with Coomassie Blue.
Restrictions:	For Research Use only

Handling

Buffer:	50 mM Tris-HCl, 10 mM reduced Glutathione, pH =8.0 in the elution buffer.
Handling Advice:	Aliquot to avoid repeated freezing and thawing.
Storage:	-80 °C
Storage Comment:	Best use within three months from the date of receipt of this protein.

Images

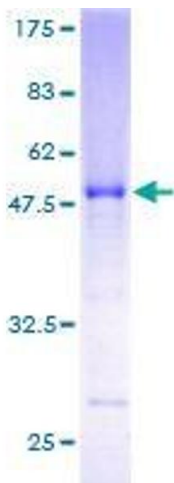


Image 1.