



[Go to Product page](#)

Datasheet for ABIN1317254  
**RAC1 Protein (AA 1-192) (GST tag)**

1 Image

Overview

Quantity:	10 µg
Target:	RAC1
Protein Characteristics:	AA 1-192
Origin:	Human
Source:	Wheat germ
Protein Type:	Recombinant
Purification tag / Conjugate:	This RAC1 protein is labelled with GST tag.
Application:	Western Blotting (WB), ELISA, Affinity Purification (AP), Antibody Array (AA)

Product Details

Purpose:	RAC1 (Human) Recombinant Protein (P01)
Sequence:	MQAIKCVVVG DGAVGKTCLL ISYTTNAFPG EYIPTVFDNY SANVMVDGKP VNLGLWDTAG QEDYDRLRPL SYPQTDVFLI CFSLVSPASF ENVRAKWYPE VRHHCNTPI ILVGTKLDLR DDKDTIEKLG EKKLIPITYP QGLAMAKEIG AVKYLECSAL TQRGLKTVFD EAIRAVLCP PVKKRKRKCL LL
Characteristics:	Human RAC1 full-length ORF ( AAH04247, 1 a.a. - 192 a.a.) recombinant protein with GST-tag at N-terminal.
Purification:	in vitro wheat germ expression system

Target Details

Target:	RAC1
---------	------

## Target Details

Abstract:	<a href="#">RAC1 Products</a>
Background:	Full Gene Name: ras-related C3 botulinum toxin substrate 1 (rho family, small GTP binding protein Rac1) Synonyms: MGC111543,MIG5,TC-25,p21-Rac1
Gene ID:	5879
Pathways:	<a href="#">WNT Signaling</a> , <a href="#">Regulation of Actin Filament Polymerization</a> , <a href="#">Cell-Cell Junction Organization</a> , <a href="#">Thromboxane A2 Receptor Signaling</a> , <a href="#">VEGF Signaling</a>

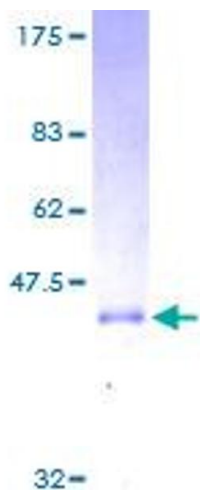
## Application Details

Application Notes:	Optimal working dilution should be determined by the investigator.
Comment:	Preparation method: in vitro, wheat germ expression system Product Quality tested by: 12.5% SDS-PAGE Stained with Coomassie Blue.
Restrictions:	For Research Use only

## Handling

Buffer:	50 mM Tris-HCl, 10 mM reduced Glutathione, pH =8.0 in the elution buffer.
Handling Advice:	Aliquot to avoid repeated freezing and thawing.
Storage:	-80 °C
Storage Comment:	Best use within three months from the date of receipt of this protein.

## Images



**Image 1.**