



[Go to Product page](#)

Datasheet for ABIN1317273

RAD23A Protein (AA 1-363) (GST tag)

1 Image

Overview

| | |
|-------------------------------|---|
| Quantity: | 10 µg |
| Target: | RAD23A |
| Protein Characteristics: | AA 1-363 |
| Origin: | Human |
| Source: | Wheat germ |
| Protein Type: | Recombinant |
| Purification tag / Conjugate: | This RAD23A protein is labelled with GST tag. |
| Application: | ELISA, Western Blotting (WB), Affinity Purification (AP), Antibody Array (AA) |

Product Details

| | |
|------------------|---|
| Purpose: | RAD23A (Human) Recombinant Protein (P01) |
| Sequence: | MAVTITLKTL QQQTFKIRME PDETVKVLKE KIAEKGRDA FPVAGQKLIY AGKILSDDVP IRDYRIDEKN FVVMVTKTK AGQGTSAPPE ASPTAAPPESS TSFPPAPTSG MSHPPPAARE DKSPSEESAP TTSPESVSGS VPSSGSSGRE EDAASTLVTG SEYETMLTEI MSMGYERERV VAALRASYNM PHRAVEYLLT GIPGSPEPEH GSVQESQVSE QPATEAAGEN PLEFLRDQPQ FQNMQRVIQQ NPALLPALLQ QLGQENPQLL QQISRHQEQF IQMLNEPPGE LADISDVEGE VGAIGEEAPQ MNYIQVTPQE KEAIERLKAL GFPESLVIQA YFACEKNENL AANFLLSQNF DDE |
| Characteristics: | Human RAD23A full-length ORF (NP_005044.1, 1 a.a. - 363 a.a.) recombinant protein with GST-tag at N-terminal. |
| Purification: | in vitro wheat germ expression system |

Target Details

| | |
|-------------------|---|
| Target: | RAD23A |
| Alternative Name: | RAD23A (RAD23A Products) |
| Background: | Full Gene Name: RAD23 homolog A (S. cerevisiae) Synonyms: HHR23A,MGC111083 |
| Gene ID: | 5886 |
| NCBI Accession: | NM_005053 |
| Pathways: | DNA Damage Repair |

Application Details

| | |
|--------------------|--|
| Application Notes: | Optimal working dilution should be determined by the investigator. |
| Comment: | Preparation method: in vitro, wheat germ expression system Product Quality tested by: 12.5% SDS-PAGE Stained with Coomassie Blue. |
| Restrictions: | For Research Use only |

Handling

| | |
|------------------|---|
| Buffer: | 50 mM Tris-HCl, 10 mM reduced Glutathione, pH =8.0 in the elution buffer. |
| Handling Advice: | Aliquot to avoid repeated freezing and thawing. |
| Storage: | -80 °C |
| Storage Comment: | Best use within three months from the date of receipt of this protein. |

Images

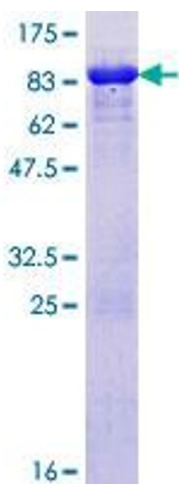


Image 1.