

Datasheet for ABIN1317275
RAD23A Protein (AA 151-250) (GST tag)



[Go to Product page](#)

1 Image

Overview

Quantity:	10 µg
Target:	RAD23A
Protein Characteristics:	AA 151-250
Origin:	Human
Source:	Wheat germ
Protein Type:	Recombinant
Purification tag / Conjugate:	This RAD23A protein is labelled with GST tag.
Application:	ELISA, Western Blotting (WB), Affinity Purification (AP), Antibody Array (AA)

Product Details

Purpose:	RAD23A (Human) Recombinant Protein (Q01)
Sequence:	EDAASTLVTG SEYETMLTEI MSMGYERERV VAALRASYN N PHRAVEYLLT GIPGSPEPEH GSVQESQVSE QPATEAAGEN PLEFLRDQPQ FQNMRQVIQQ
Characteristics:	Human RAD23A partial ORF (AAH14026, 151 a.a. - 250 a.a.) recombinant protein with GST-tag at N-terminal.
Purification:	in vitro wheat germ expression system

Target Details

Target:	RAD23A
Alternative Name:	RAD23A (RAD23A Products)

Target Details

Background: Full Gene Name: RAD23 homolog A (*S. cerevisiae*)
Synonyms: HHR23A,MGC111083

Gene ID: 5886

Pathways: [DNA Damage Repair](#)

Application Details

Application Notes: Optimal working dilution should be determined by the investigator.

Comment: Preparation method: in vitro, wheat germ expression system
Product Quality tested by: 12.5% SDS-PAGE Stained with Coomassie Blue.

Restrictions: For Research Use only

Handling

Buffer: 50 mM Tris-HCl, 10 mM reduced Glutathione, pH =8.0 in the elution buffer.

Handling Advice: Aliquot to avoid repeated freezing and thawing.

Storage: -80 °C

Storage Comment: Best use within three months from the date of receipt of this protein.

Images

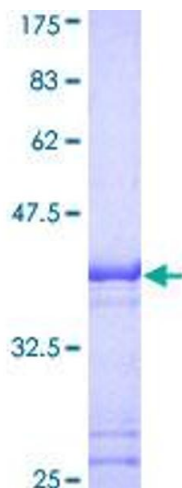


Image 1.