



[Go to Product page](#)

Datasheet for ABIN1317300
RAD9B Protein (AA 1-271) (GST tag)

1 Image

Overview

Quantity:	10 µg
Target:	RAD9B
Protein Characteristics:	AA 1-271
Origin:	Human
Source:	Wheat germ
Protein Type:	Recombinant
Purification tag / Conjugate:	This RAD9B protein is labelled with GST tag.
Application:	ELISA, Western Blotting (WB), Affinity Purification (AP), Antibody Array (AA)

Product Details

Purpose:	RAD9B (Human) Recombinant Protein (P01)
Sequence:	MIQRLLADA IVLFTSSQEE VTLAVTPLNF CLKSSNEESM DLSNAVHSEM FVGSDEFDFF QIGMDTEITF CFKELKGILT FSEATHAPIS IYDFDPGKPL ALSIDDM LVE ANFILATLAD EQSRASSPQS LCLSQKRKRS DLIEKKAGKN VTGQALECIS KKAAPRRLYP KETLTNISAL ENCGSPAMKR VDGDVSEVSE SSVSNTEEVV GSLCLRKFSC MFFGAVSSDQ QEHFNHPFDS LARASDSEED MNNVCCRKEF NGSDAKYFCI I
Characteristics:	Human RAD9B full-length ORF (AAH68031.2, 1 a.a. - 271 a.a.) recombinant protein with GST-tag at N-terminal.
Purification:	in vitro wheat germ expression system

Target Details

Target:	RAD9B
Alternative Name:	RAD9B (RAD9B Products)
Background:	Full Gene Name: RAD9 homolog B (S. pombe) Synonyms: FLJ40346,MGC75426
Gene ID:	144715

Application Details

Application Notes:	Optimal working dilution should be determined by the investigator.
Comment:	Preparation method: in vitro, wheat germ expression system Product Quality tested by: 12.5% SDS-PAGE Stained with Coomassie Blue.
Restrictions:	For Research Use only

Handling

Buffer:	50 mM Tris-HCl, 10 mM reduced Glutathione, pH =8.0 in the elution buffer.
Handling Advice:	Aliquot to avoid repeated freezing and thawing.
Storage:	-80 °C
Storage Comment:	Best use within three months from the date of receipt of this protein.

Images

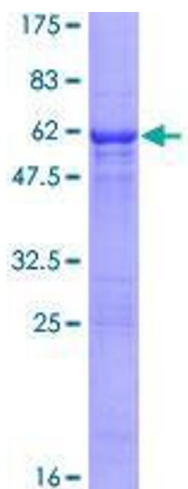


Image 1.