

Datasheet for ABIN1317302  
**RAD9B Protein (AA 150-258) (GST tag)**



[Go to Product page](#)

1 Image

Overview

Quantity:	10 µg
Target:	RAD9B
Protein Characteristics:	AA 150-258
Origin:	Human
Source:	Wheat germ
Protein Type:	Recombinant
Purification tag / Conjugate:	This RAD9B protein is labelled with GST tag.
Application:	ELISA, Western Blotting (WB), Affinity Purification (AP), Antibody Array (AA)

Product Details

Purpose:	RAD9B (Human) Recombinant Protein (Q01)
Sequence:	NVTGQALECI SKKAAPRRLY PKETLTNISA LENCGSPAMK RVDGDVSEVS ESSVSNTEEV PGSLCLRKFS CMFFGAVSSD QQEHFNHPFD SLARASDSEE DMNNGSFSI
Characteristics:	Human RAD9B partial ORF ( NP_689655, 150 a.a. - 258 a.a.) recombinant protein with GST-tag at N-terminal.
Purification:	in vitro wheat germ expression system

Target Details

Target:	RAD9B
Alternative Name:	RAD9B ( <a href="#">RAD9B Products</a> )

## Target Details

Background: Full Gene Name: RAD9 homolog B (S. pombe)  
Synonyms: FLJ40346,MGC75426

Gene ID: 144715

NCBI Accession: [NM\\_152442](#)

## Application Details

Application Notes: Optimal working dilution should be determined by the investigator.

Comment: Preparation method: in vitro, wheat germ expression system  
Product Quality tested by: 12.5% SDS-PAGE Stained with Coomassie Blue.

Restrictions: For Research Use only

## Handling

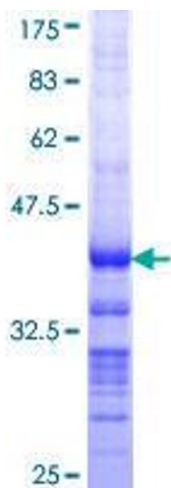
Buffer: 50 mM Tris-HCl, 10 mM reduced Glutathione, pH =8.0 in the elution buffer.

Handling Advice: Aliquot to avoid repeated freezing and thawing.

Storage: -80 °C

Storage Comment: Best use within three months from the date of receipt of this protein.

## Images



**Image 1.**