

Datasheet for ABIN1317326  
**RAGE Protein (AA 134-231) (GST tag)**



[Go to Product page](#)

1 Image

Overview

Quantity:	10 µg
Target:	RAGE (AGER)
Protein Characteristics:	AA 134-231
Origin:	Human
Source:	Wheat germ
Protein Type:	Recombinant
Purification tag / Conjugate:	This RAGE protein is labelled with GST tag.
Application:	Western Blotting (WB), ELISA, Affinity Purification (AP), Antibody Array (AA)

Product Details

Purpose:	RAGE (Human) Recombinant Protein (Q01)
Sequence:	ILIKQDVLKL GDFGSCRSVY SKQPYTEYIS TRWYRAPECL LTDGFYTYKM DLWSAGCVFY EIASLQPLFP GVNELDQISK IHDVIGTPAQ KILTKFKQ
Characteristics:	Human RAGE partial ORF ( NP_055041, 134 a.a. - 231 a.a.) recombinant protein with GST-tag at N-terminal.
Purification:	in vitro wheat germ expression system

Target Details

Target:	RAGE (AGER)
Alternative Name:	<a href="#">RAGE (AGER Products)</a>

## Target Details

Background:	Full Gene Name: renal tumor antigen Synonyms: MOK,RAGE1
Gene ID:	5891
NCBI Accession:	<a href="#">NM_014226</a>
Pathways:	<a href="#">Carbohydrate Homeostasis</a> , <a href="#">Toll-Like Receptors Cascades</a> , <a href="#">Smooth Muscle Cell Migration</a> , <a href="#">S100 Proteins</a>

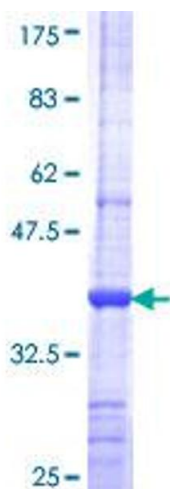
## Application Details

Application Notes:	Optimal working dilution should be determined by the investigator.
Comment:	Preparation method: in vitro, wheat germ expression system Product Quality tested by: 12.5% SDS-PAGE Stained with Coomassie Blue.
Restrictions:	For Research Use only

## Handling

Buffer:	50 mM Tris-HCl, 10 mM reduced Glutathione, pH =8.0 in the elution buffer.
Handling Advice:	Aliquot to avoid repeated freezing and thawing.
Storage:	-80 °C
Storage Comment:	Best use within three months from the date of receipt of this protein.

## Images



**Image 1.**