



[Go to Product page](#)

Datasheet for ABIN1317359

Raly Protein (AA 1-307) (GST tag)

1 Image

Overview

Quantity:	10 µg
Target:	Raly (RALY)
Protein Characteristics:	AA 1-307
Origin:	Human
Source:	Wheat germ
Protein Type:	Recombinant
Purification tag / Conjugate:	This Raly protein is labelled with GST tag.
Application:	ELISA, Western Blotting (WB), Affinity Purification (AP), Antibody Array (AA)

Product Details

Purpose:	RALY (Human) Recombinant Protein (P01)
Sequence:	MSLKLQASNV TNKNDPKSIN SRVFIGNLNT ALVKKSDVET IFSKYGRVAG CSVHKGYAFV QYSNERHARA AVLGENGRVL AGQTLNINMA GEPKPDRPKG LKRAASAIYS GYIFDYDYR DDFYDRLFY RGRLSPVVPV RAVPVKRPRV TVPLVRRVKT NVPVKLFARS TAVTTSSAKI KLKSSSELQAI KTELQIKSN IDALLSRLEQ IAAEQKANPD GKKGDDGGGA SGGGGGGGGG GGGGSGGGGG GGSSRPPAPQ ENTSEAGLP QGEARTRDDG DEEGLLTHSE EEEHLSQDTD ADDGALQ
Characteristics:	Human RALY full-length ORF (AAI03754.1, 1 a.a. - 307 a.a.) recombinant protein with GST-tag at N-terminal.
Purification:	in vitro wheat germ expression system

Target Details

Target:	Raly (RALY)
Alternative Name:	RALY (RALY Products)
Background:	Full Gene Name: RNA binding protein, autoantigenic (hnRNP-associated with lethal yellow homolog (mouse)) Synonyms: HNRPCL2,MGC117312,P542
Gene ID:	22913

Application Details

Application Notes:	Optimal working dilution should be determined by the investigator.
Comment:	Preparation method: in vitro, wheat germ expression system Product Quality tested by: 12.5% SDS-PAGE Stained with Coomassie Blue.
Restrictions:	For Research Use only

Handling

Buffer:	50 mM Tris-HCl, 10 mM reduced Glutathione, pH =8.0 in the elution buffer.
Handling Advice:	Aliquot to avoid repeated freezing and thawing.
Storage:	-80 °C
Storage Comment:	Best use within three months from the date of receipt of this protein.

Images

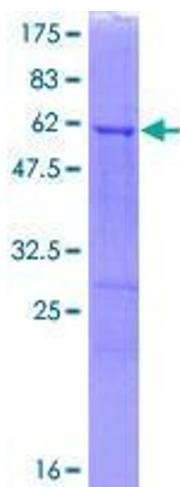


Image 1.