



[Go to Product page](#)

Datasheet for ABIN1317365

RAMP1 Protein (AA 27-117) (GST tag)

1 Image

Overview

Quantity:	10 µg
Target:	RAMP1
Protein Characteristics:	AA 27-117
Origin:	Human
Source:	Wheat germ
Protein Type:	Recombinant
Purification tag / Conjugate:	This RAMP1 protein is labelled with GST tag.
Application:	ELISA, Western Blotting (WB), Affinity Purification (AP), Antibody Array (AA)

Product Details

Purpose:	RAMP1 (Human) Recombinant Protein (Q01)
Sequence:	CQEANYGALL RELCLTQFQV DMEAVGETLW CDWGRTIRSY RELADCTWHM AEKLGCFWPN AEVDRFFLAV HGRYFRSCPI SGRAVRDPPG S
Characteristics:	Human RAMP1 partial ORF (NP_005846, 27 a.a. - 117 a.a.) recombinant protein with GST-tag at N-terminal.
Purification:	in vitro wheat germ expression system

Target Details

Target:	RAMP1
Alternative Name:	RAMP1 (RAMP1 Products)

Target Details

Background:	Full Gene Name: receptor (G protein-coupled) activity modifying protein 1 Synonyms:
Gene ID:	10267
NCBI Accession:	NM_005855
Pathways:	cAMP Metabolic Process , Myometrial Relaxation and Contraction , Regulation of G-Protein Coupled Receptor Protein Signaling , Regulation of Carbohydrate Metabolic Process

Application Details

Application Notes:	Optimal working dilution should be determined by the investigator.
Comment:	Preparation method: in vitro, wheat germ expression system Product Quality tested by: 12.5% SDS-PAGE Stained with Coomassie Blue.
Restrictions:	For Research Use only

Handling

Buffer:	50 mM Tris-HCl, 10 mM reduced Glutathione, pH =8.0 in the elution buffer.
Handling Advice:	Aliquot to avoid repeated freezing and thawing.
Storage:	-80 °C
Storage Comment:	Best use within three months from the date of receipt of this protein.

Images

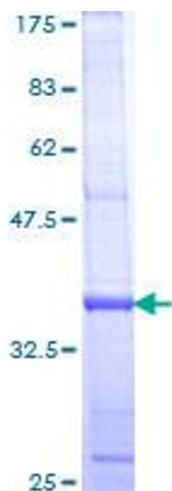


Image 1.