



Datasheet for ABIN1317425

## RAPGEFL1 Protein (AA 1-99) (GST tag)



[Go to Product page](#)

### 1 Image

#### Overview

Quantity:	10 µg
Target:	RAPGEFL1
Protein Characteristics:	AA 1-99
Origin:	Human
Source:	Wheat germ
Protein Type:	Recombinant
Purification tag / Conjugate:	This RAPGEFL1 protein is labelled with GST tag.
Application:	ELISA, Western Blotting (WB), Affinity Purification (AP), Antibody Array (AA)

#### Product Details

Purpose:	RAPGEFL1 (Human) Recombinant Protein (Q01)
Sequence:	MEGPEGLGRK QAACLAMLLHF LDITYQGLLQE EEGAGHIIKD LYLLIMKDES LYQGLREDTL RLHQLVETVE LKIPEENQPP SKQVKPLFRH FRRIDSCLQ
Characteristics:	Human RAPGEFL1 partial ORF ( NP_057423, 1 a.a. - 99 a.a.) recombinant protein with GST-tag at N-terminal.
Purification:	in vitro wheat germ expression system

#### Target Details

Target:	RAPGEFL1
Alternative Name:	RAPGEFL1 ( <a href="#">RAPGEFL1 Products</a> )

## Target Details

Background:	Full Gene Name: Rap guanine nucleotide exchange factor (GEF)-like 1 Synonyms: Link-GEFII,MGC134798,MGC134799
Gene ID:	51195
NCBI Accession:	<a href="#">NM_016339</a>
Pathways:	<a href="#">Interferon-gamma Pathway</a> , <a href="#">Neurotrophin Signaling Pathway</a> , <a href="#">Platelet-derived growth Factor Receptor Signaling</a> , <a href="#">Signaling of Hepatocyte Growth Factor Receptor</a>

## Application Details

Application Notes:	Optimal working dilution should be determined by the investigator.
Comment:	Preparation method: in vitro, wheat germ expression system Product Quality tested by: 12.5% SDS-PAGE Stained with Coomassie Blue.
Restrictions:	For Research Use only

## Handling

Buffer:	50 mM Tris-HCl, 10 mM reduced Glutathione, pH =8.0 in the elution buffer.
Handling Advice:	Aliquot to avoid repeated freezing and thawing.
Storage:	-80 °C
Storage Comment:	Best use within three months from the date of receipt of this protein.

## Images

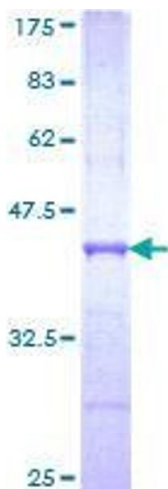


Image 1.