

Datasheet for ABIN1317490  
**RASGEF1C Protein (GST tag)**



[Go to Product page](#)

1 Image

## Overview

Quantity:	10 µg
Target:	RASGEF1C
Origin:	Human
Source:	Wheat germ
Protein Type:	Recombinant
Purification tag / Conjugate:	This RASGEF1C protein is labelled with GST tag.
Application:	ELISA, Western Blotting (WB), Affinity Purification (AP), Antibody Array (AA)

## Product Details

Purpose:	RASGEF1C (Human) Recombinant Protein (P01)
Sequence:	MPQTLSASDM VTPGSLSPPP TEPTDGEQAG QPLLDGAPSS ASLETLIQHL VPTADYYPEK AYIFTFLSS RLFIEPRELL ARVCHLCIEQ QQLDKPVLDK ARVRKFGPKL LQLLAEWTTET FPRDFQEEST IGHLKDVVGR IAPCDEAYRK RMHQLLQALH QKLAALRQGP EGLVGADKPI SYRTKPPASI HRELLGVCS D PYTLAQLLTH VELERLRHIG PEEFVQAFVN KDPLASTKPC FSDKTSNLEA YVKWFNRLCY LVATEICMPA KKKQRAQVIE FFIDVARECF NIGNFNLSLMA IISGMNMSPV SRLKKTWAKV RTAKFFILEH QMDPTGNFCN YRTALRGA AH RSLTAHSSRE KIVIPFFSLL IKDIYFLNEG CANRLPNGHV NFEKFLELAK QVGEFITWKQ VECPF EQDAS ITHYLYTAPI FSEDGLYLAS YESESPENQT EKERWKALRS SILGKT
Characteristics:	Human RASGEF1C full-length ORF ( NP_778232.2, 1 a.a. - 466 a.a.) recombinant protein with GST-tag at N-terminal.
Purification:	in vitro wheat germ expression system

## Target Details

Target:	RASGEF1C
Alternative Name:	RASGEF1C ( <a href="#">RASGEF1C Products</a> )
Background:	Gene: RasGEF domain family, member 1C Synonyms: FLJ35841
Gene ID:	255426
NCBI Accession:	<a href="#">NM_175062</a>

## Application Details

Application Notes:	Optimal working dilution should be determined by the investigator.
Restrictions:	For Research Use only

## Handling

Buffer:	50 mM Tris-HCl, 10 mM reduced Glutathione, pH =8.0 in the elution buffer.
Handling Advice:	Aliquot to avoid repeated freezing and thawing.
Storage:	-80 °C
Storage Comment:	Best use within three months from the date of receipt of this protein.

## Images

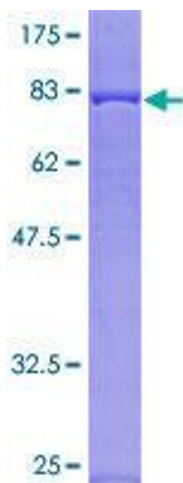


Image 1.