



[Go to Product page](#)

Datasheet for ABIN1317528

RASSF3 Protein (AA 29-112) (GST tag)

1 Image

Overview

Quantity:	10 µg
Target:	RASSF3
Protein Characteristics:	AA 29-112
Origin:	Human
Source:	Wheat germ
Protein Type:	Recombinant
Purification tag / Conjugate:	This RASSF3 protein is labelled with GST tag.
Application:	ELISA, Western Blotting (WB), Affinity Purification (AP), Antibody Array (AA)

Product Details

Purpose:	RASSF3 (Human) Recombinant Protein (Q01)
Sequence:	QGKPRSGQQD VEKEKETHSY LSKEEIKEKV HKYNLAVTDK LKMTLNSNGI YTGFIKVQME LCKPPQTSPN SGKLPSSNG CMNT
Characteristics:	Human RASSF3 partial ORF (NP_835463.1, 29 a.a. - 112 a.a.) recombinant protein with GST-tag at N-terminal.
Purification:	in vitro wheat germ expression system

Target Details

Target:	RASSF3
Alternative Name:	RASSF3 (RASSF3 Products)

Target Details

Background:	Full Gene Name: Ras association (RalGDS/AF-6) domain family member 3 Synonyms: MGC119194,MGC119195,MGC119197,RASSF5
Gene ID:	283349
NCBI Accession:	NM_178169

Application Details

Application Notes:	Optimal working dilution should be determined by the investigator.
Comment:	Preparation method: in vitro, wheat germ expression system Product Quality tested by: 12.5% SDS-PAGE Stained with Coomassie Blue.
Restrictions:	For Research Use only

Handling

Buffer:	50 mM Tris-HCl, 10 mM reduced Glutathione, pH =8.0 in the elution buffer.
Handling Advice:	Aliquot to avoid repeated freezing and thawing.
Storage:	-80 °C
Storage Comment:	Best use within three months from the date of receipt of this protein.

Images

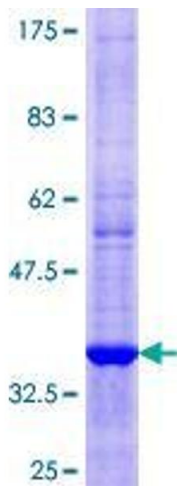


Image 1.