



[Go to Product page](#)

Datasheet for ABIN1317538

RASSF8 Protein (AA 40-137) (GST tag)

1 Image

Overview

Quantity:	10 µg
Target:	RASSF8
Protein Characteristics:	AA 40-137
Origin:	Human
Source:	Wheat germ
Protein Type:	Recombinant
Purification tag / Conjugate:	This RASSF8 protein is labelled with GST tag.
Application:	ELISA, Western Blotting (WB), Affinity Purification (AP), Antibody Array (AA)

Product Details

Purpose:	C12orf2 (Human) Recombinant Protein (Q01)
Sequence:	YTLIEKWRDT ERHLAPHENP IISLNKWGQY ASDVQLILRR TGPSLSERPT SDSVARIPER TLYRQSLPPL AKLRPQIDKS IKRREPKRKS LTFTGGAK
Characteristics:	Human C12orf2 partial ORF (NP_009142, 40 a.a. - 137 a.a.) recombinant protein with GST-tag at N-terminal.
Purification:	in vitro wheat germ expression system

Target Details

Target:	RASSF8
Alternative Name:	RASSF8 (RASSF8 Products)

Target Details

Background:	Full Gene Name: Ras association (RalGDS/AF-6) domain family (N-terminal) member 8 Synonyms: C12orf2, HoJ-1
Gene ID:	11228
NCBI Accession:	NM_007211
Pathways:	Chromatin Binding

Application Details

Application Notes:	Optimal working dilution should be determined by the investigator.
Comment:	Preparation method: in vitro, wheat germ expression system Product Quality tested by: 12.5% SDS-PAGE Stained with Coomassie Blue.
Restrictions:	For Research Use only

Handling

Buffer:	50 mM Tris-HCl, 10 mM reduced Glutathione, pH =8.0 in the elution buffer.
Handling Advice:	Aliquot to avoid repeated freezing and thawing.
Storage:	-80 °C
Storage Comment:	Best use within three months from the date of receipt of this protein.

Images

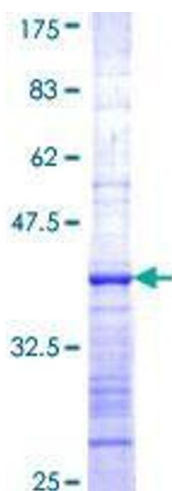


Image 1.