

Datasheet for ABIN1317543

Retinoblastoma 1 Protein (RB1) (AA 371-470) (GST tag)



[Go to Product page](#)

1 Image

Overview

Quantity:	10 µg
Target:	Retinoblastoma 1 (RB1)
Protein Characteristics:	AA 371-470
Origin:	Human
Source:	Wheat germ
Protein Type:	Recombinant
Purification tag / Conjugate:	This Retinoblastoma 1 protein is labelled with GST tag.
Application:	Western Blotting (WB), ELISA, Affinity Purification (AP), Antibody Array (AA)

Product Details

Purpose:	RB1 (Human) Recombinant Protein (Q01)
Sequence:	PHTPVRTVMN TIQLMMILN SASDQPSNL ISYFNNCTVN PKESILKRVK DIGYIFKEKF AKAVGQGCVE IGSQRYKLGV RLYYRVMESM LKSEEEERLSI
Characteristics:	Human RB1 partial ORF (AAH40540, 371 a.a. - 470 a.a.) recombinant protein with GST-tag at N-terminal.
Purification:	in vitro wheat germ expression system

Target Details

Target:	Retinoblastoma 1 (RB1)
Alternative Name:	RB1 (RB1 Products)

Target Details

Background:	Full Gene Name: retinoblastoma 1 Synonyms: OSRC,RB,p105-Rb,pRb,pp110
Gene ID:	5925
Pathways:	Cell Division Cycle , Intracellular Steroid Hormone Receptor Signaling Pathway , Mitotic G1-G1/S Phases , DNA Replication , Maintenance of Protein Location , Synthesis of DNA , Autophagy

Application Details

Application Notes:	Optimal working dilution should be determined by the investigator.
Comment:	Preparation method: in vitro, wheat germ expression system Product Quality tested by: 12.5% SDS-PAGE Stained with Coomassie Blue.
Restrictions:	For Research Use only

Handling

Buffer:	50 mM Tris-HCl, 10 mM reduced Glutathione, pH =8.0 in the elution buffer.
Handling Advice:	Aliquot to avoid repeated freezing and thawing.
Storage:	-80 °C
Storage Comment:	Best use within three months from the date of receipt of this protein.

Images

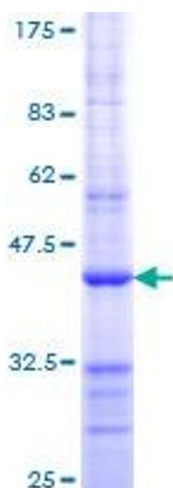


Image 1.