

Datasheet for ABIN1317549
RBBP5 Protein (AA 1-538) (GST tag)



[Go to Product page](#)

1 Image

Overview

Quantity:	10 µg
Target:	RBBP5
Protein Characteristics:	AA 1-538
Origin:	Human
Source:	Wheat germ
Protein Type:	Recombinant
Purification tag / Conjugate:	This RBBP5 protein is labelled with GST tag.
Application:	ELISA, Western Blotting (WB), Affinity Purification (AP), Antibody Array (AA)

Product Details

Purpose:	RBBP5 (Human) Recombinant Protein (P01)
Sequence:	<p>MNLELLESFG QNYPEEADGT LDCISMALTC TFNRWGTLA VGCNDGRIVI WDFLTRGIAK IISAHIHVPC SLCWSRDGHK LVSASTDNIV SQWDVLSGDC DQRFRRFPSPI LKVQYHPRDQ NKVLVCPMKS APVMLTSLDS KHVVLVDDDD SDLNVVASFD RRGEYIYTGK AKGKILVLKT DSQDLVASFR VTTGTSNTTA IKSIEFARKG SCFLINTADR IIRVYDGREI LTCGRDGEPE PMQKLQDLVN RTPWKKCCFS GDGEYIVAGS ARQHLYIWE KSIGNLVKIL HGTRGELLDD VAWHPVRPII ASISSGVVSI WAQNQVENWS AFAPDFKELD ENVEYEERES EFDIEDEDKS EPEQTGADAA EDEEVDVTSV DPAAFCSSD EELEDSKALL YLPIAPEVED PEENPYGPPP DAVQTSMLDE GASSEKRRQS SADGSQPPKK KPKTTNIELQ GVPNDEVHPL LGVKGDGKSK KKQAGRPKGS KGKEKDSPFK PKLYKGRGL PLEGSAGKGV QAELSPLTA GGAISELL</p>
Characteristics:	Human RBBP5 full-length ORF (NP_005048.2, 1 a.a. - 538 a.a.) recombinant protein with GST-tag at N-terminal.

Product Details

Purification: in vitro wheat germ expression system

Target Details

Target: RBBP5

Alternative Name: RBBP5 ([RBBP5 Products](#))

Background: Full Gene Name: retinoblastoma binding protein 5
Synonyms: RBQ3,SWD1

Gene ID: 5929

NCBI Accession: [NM_005057](#)

Application Details

Application Notes: Optimal working dilution should be determined by the investigator.

Comment: Preparation method: in vitro, wheat germ expression system
Product Quality tested by: 12.5% SDS-PAGE Stained with Coomassie Blue.

Restrictions: For Research Use only

Handling

Buffer: 50 mM Tris-HCl, 10 mM reduced Glutathione, pH =8.0 in the elution buffer.

Handling Advice: Aliquot to avoid repeated freezing and thawing.

Storage: -80 °C

Storage Comment: Best use within three months from the date of receipt of this protein.

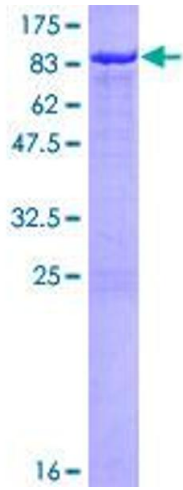


Image 1.