



[Go to Product page](#)

Datasheet for ABIN1317553

## RBBP6 Protein (AA 1-118) (GST tag)

### 1 Image

#### Overview

Quantity:	10 µg
Target:	RBBP6
Protein Characteristics:	AA 1-118
Origin:	Human
Source:	Wheat germ
Protein Type:	Recombinant
Purification tag / Conjugate:	This RBBP6 protein is labelled with GST tag.
Application:	Affinity Purification (AP), Antibody Array (AA), ELISA, Western Blotting (WB)

#### Product Details

Purpose:	RBBP6 (Human) Recombinant Protein (P01)
Sequence:	MSCVHYKFSS KLNVDYTVTFD GLHISLCDLK KQIMGREKLG AADCDLQITN AQTKEEYTDG NALIPKNSSV IRRPIGGV KSTSKTYVIS RTEPAMATTK AVCKNTISHF FYTLLLPL
Characteristics:	Human RBBP6 full-length ORF ( NP_116015.2, 1 a.a. - 118 a.a.) recombinant protein with GST-tag at N-terminal.
Purification:	in vitro wheat germ expression system

#### Target Details

Target:	RBBP6
Alternative Name:	RBBP6 ( <a href="#">RBBP6 Products</a> )

## Target Details

Background:	Full Gene Name: retinoblastoma binding protein 6 Synonyms: DKFZp686P0638,DKFZp761B2423,MY038,P2P-R,PACT,RBQ-1,SNAMA
Gene ID:	5930
NCBI Accession:	<a href="#">NM_032626</a>
Pathways:	<a href="#">Regulatory RNA Pathways</a>

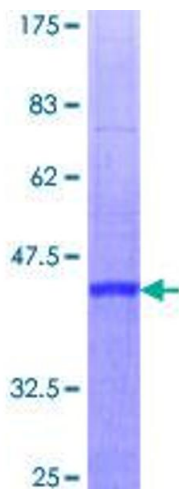
## Application Details

Application Notes:	Optimal working dilution should be determined by the investigator.
Comment:	Preparation method: in vitro, wheat germ expression system Product Quality tested by: 12.5% SDS-PAGE Stained with Coomassie Blue.
Restrictions:	For Research Use only

## Handling

Buffer:	50 mM Tris-HCl, 10 mM reduced Glutathione, pH =8.0 in the elution buffer.
Handling Advice:	Aliquot to avoid repeated freezing and thawing.
Storage:	-80 °C
Storage Comment:	Best use within three months from the date of receipt of this protein.

## Images



**Image 1.**