



[Go to Product page](#)

Datasheet for ABIN1317555

RBBP6 Protein (AA 1582-1691) (GST tag)

1 Image

Overview

Quantity:	10 µg
Target:	RBBP6
Protein Characteristics:	AA 1582-1691
Origin:	Human
Source:	Wheat germ
Protein Type:	Recombinant
Purification tag / Conjugate:	This RBBP6 protein is labelled with GST tag.
Application:	Affinity Purification (AP), Antibody Array (AA), ELISA, Western Blotting (WB)

Product Details

Purpose:	RBBP6 (Human) Recombinant Protein (Q01)
Sequence:	SSGNKLLYIL NPPETQVEKE QITGQIDKST VKPKPQLSHS SRLSSDLTRE TDEAAFEPDY NESDSESNVS VKEEESGNI SKDLKDKIVE KAKESLDTAA VVQVGISRNQ
Characteristics:	Human RBBP6 partial ORF (NP_008841, 1582 a.a. - 1691 a.a.) recombinant protein with GST-tag at N-terminal.
Purification:	in vitro wheat germ expression system

Target Details

Target:	RBBP6
Alternative Name:	RBBP6 (RBBP6 Products)

Target Details

Background:	Full Gene Name: retinoblastoma binding protein 6 Synonyms: DKFZp686P0638,DKFZp761B2423,MY038,P2P-R,PACT,RBQ-1,SNAMA
Gene ID:	5930
NCBI Accession:	NM_006910
Pathways:	Regulatory RNA Pathways

Application Details

Application Notes:	Optimal working dilution should be determined by the investigator.
Comment:	Preparation method: in vitro, wheat germ expression system Product Quality tested by: 12.5% SDS-PAGE Stained with Coomassie Blue.
Restrictions:	For Research Use only

Handling

Buffer:	50 mM Tris-HCl, 10 mM reduced Glutathione, pH =8.0 in the elution buffer.
Handling Advice:	Aliquot to avoid repeated freezing and thawing.
Storage:	-80 °C
Storage Comment:	Best use within three months from the date of receipt of this protein.

Images

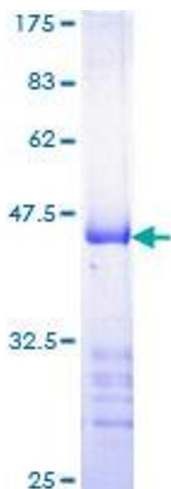


Image 1.