

Datasheet for ABIN1317597
RBM34 Protein (AA 1-425) (GST tag)



[Go to Product page](#)

1 Image

Overview

Quantity:	10 µg
Target:	RBM34
Protein Characteristics:	AA 1-425
Origin:	Human
Source:	Wheat germ
Protein Type:	Recombinant
Purification tag / Conjugate:	This RBM34 protein is labelled with GST tag.
Application:	ELISA, Western Blotting (WB), Affinity Purification (AP), Antibody Array (AA)

Product Details

Purpose:	RBM34 (Human) Recombinant Protein (P01)
Sequence:	MSKRKRKRSV QEGENPDDGV RGSPPEYRL QQVASSLFRG EHHSRGGTGR LASLFSSLEP QIQPVYVPVP KQTIKTKRN EEEESTSQIE RPLSQEPAKK VKAKKKHTNA EKKLADRESA LASADLEEEI HQKQGQKRKN SQPGVKVADR KILDDTETV VSQRKKIQIN QEEERLKNER TVFVGNLPVT CNKKKLKSF KEYGQIESVR FRSLIPAEGT LSKKLAAIKR KIHPDQKNIN AYVVFKEESA ATQALKRNGA QIADGFRIRV DLASETSSRD KRSVFGNLP YKVEESAIEK HFLDCGSIMA VRIVRDKMTG IGKGFYVLF ENTDSVHLAL KLNNSELMGR KLRVMRSVVK EKFKQNSNP RLKNVSKPKQ GLNFTSKTAE GHPKSLFIGE KAVLLKTKKK GQKSGRPPK QRKQK
Characteristics:	Human RBM34 full-length ORF (NP_055829.1, 1 a.a. - 425 a.a.) recombinant protein with GST-tag at N-terminal.

Product Details

Purification: in vitro wheat germ expression system

Target Details

Target: RBM34

Alternative Name: RBM34 ([RBM34 Products](#))

Background: Full Gene Name: RNA binding motif protein 34
Synonyms: KIAA0117

Gene ID: 23029

NCBI Accession: [NM_015014](#)

Application Details

Application Notes: Optimal working dilution should be determined by the investigator.

Comment: Preparation method: in vitro, wheat germ expression system
Product Quality tested by: 12.5% SDS-PAGE Stained with Coomassie Blue.

Restrictions: For Research Use only

Handling

Buffer: 50 mM Tris-HCl, 10 mM reduced Glutathione, pH =8.0 in the elution buffer.

Handling Advice: Aliquot to avoid repeated freezing and thawing.

Storage: -80 °C

Storage Comment: Best use within three months from the date of receipt of this protein.

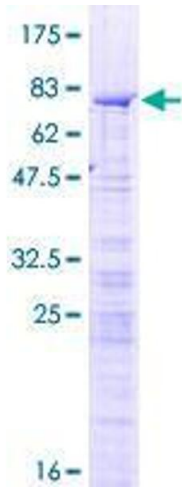


Image 1.