



[Go to Product page](#)

Datasheet for ABIN1317605

## RBM39 Protein (AA 423-472) (GST tag)

### 1 Image

#### Overview

Quantity:	10 µg
Target:	RBM39
Protein Characteristics:	AA 423-472
Origin:	Human
Source:	Wheat germ
Protein Type:	Recombinant
Purification tag / Conjugate:	This RBM39 protein is labelled with GST tag.
Application:	ELISA, Western Blotting (WB), Affinity Purification (AP), Antibody Array (AA)

#### Product Details

Purpose:	RNPC2 (Human) Recombinant Protein (Q01)
Sequence:	TQCFQLSNMF NPQTEEEVGW DTEIKDDVIE ECNKHGGVIH IYVDKNSAQQ
Characteristics:	Human RNPC2 partial ORF ( NP_909122, 423 a.a. - 472 a.a.) recombinant protein with GST-tag at N-terminal.
Purification:	in vitro wheat germ expression system

#### Target Details

Target:	RBM39
Alternative Name:	RBM39 ( <a href="#">RBM39 Products</a> )
Background:	Full Gene Name: RNA binding motif protein 39

## Target Details

Synonyms: CAPER,CAPERalpha,CC1.3,DKFZp781C0423,FLJ44170,HCC1,RNPC2,fsAP59

Gene ID: 9584

NCBI Accession: [NM\\_184234](#)

## Application Details

Application Notes: Optimal working dilution should be determined by the investigator.

Comment: Preparation method: in vitro, wheat germ expression system  
Product Quality tested by: 12.5% SDS-PAGE Stained with Coomassie Blue.

Restrictions: For Research Use only

## Handling

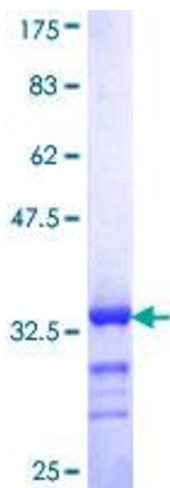
Buffer: 50 mM Tris-HCl, 10 mM reduced Glutathione, pH =8.0 in the elution buffer.

Handling Advice: Aliquot to avoid repeated freezing and thawing.

Storage: -80 °C

Storage Comment: Best use within three months from the date of receipt of this protein.

## Images



**Image 1.**